

LOCATION

Welcome to Collier County, a seaside paradise tucked into Southwest Florida's gulf coast. With a total area of 2,305 square miles, and a land area of 2,025 square miles, Collier County is the largest county in Florida and is larger than the states of Rhode Island and Delaware. Collier County is a thriving area in Florida, featuring one of the best business climates in the nation. With its geographic location, diverse demographics, affluent tourism, international trade, efficient education and transportation systems, and strong industrial work force, Collier County is a premier business destination in Florida. Collier County is comprised of municipalities and unincorporated communities listed below. These municipalities and communities have shaped the Southwest Region and Collier County into the premier business destination it is today.

Municipalities

- Naples
- Everglades City
- Marco Island

Unincorporated Communities

- Ochopee
- Orangetree
- Pelican Bay
- Pine Ridge
- Ava Maria
- Chokoloskee
- East Naples
- Golden Gate
- Goodland
- Immokalee
- Lely
- Naples Park
- Naples Manor
- Vineyards



If you would like to move or expand your business in Collier County,
contact:

Collier Business & Economic Development
2800 N. Horseshoe Drive
Naples, Florida 34104
Phone (239)252-8990
Fax (239)252-2405

www.NaplesWorks.com

Demographics

Year round warmth, beautiful sunshine and its diverse and strong business community makes Collier County the ideal corporate location for business growth and future success. Collier County and its surrounding communities have a current estimated population 321,520. The Naples Metroploitan Statistcial Area is currently the 15th fastest growing Metropolitian area in Florida. From 2000 to 2010, the population of the Naples metropolitan statistical area has grown 25 percent. According to the U.S Cenus Bureau, the population of Collier County is projected to reach 449,700 in 2030 with a 40 percent increase over the population in 2010.

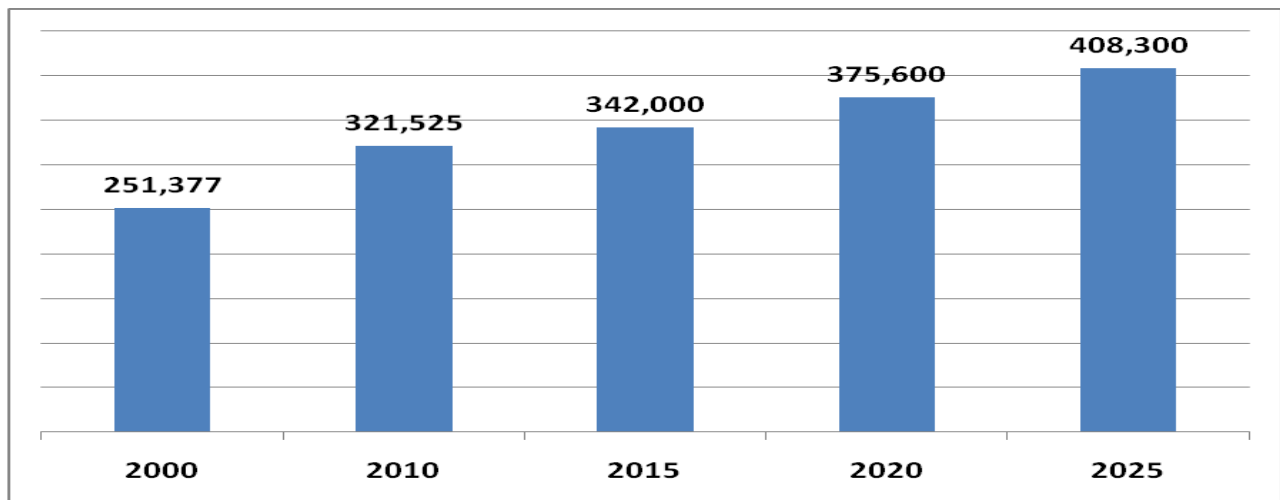
**Collier County – Naples Marco Island MSA
2010 Population
321,520**

Source: U.S. Census Bureau, 2/10/2012

POPULATION CHARACTERISTICS

The Naples-Marco Island MSA population is 84% white, 7% African American, and 6% Asian, American Indian, Pacific Islander, and mixed races. The Hispanic population makes up 26% of the total population. The area is evenly split between male and female, with the male population increased by 29% and female population increased by 24% from 2000 to 2010. The median age in 2010 was 46.9 years old. More than 80.1 percent of the population is younger than 65 years of age. The prime working age population (20-54) is 38 percent of Collier County's population.

POPULATION ESTIMATES AND PROJECTIONS - COLLIER COUNTY, FLORIDA



Source: University of Florida, Bureau of Economic and Business Research, Florida Population Studies, CC. Comprehensive Planning Dept. 2012

From 2005 to 2009, the Naples-Marco Island MSA was the 15th fastest growing metropolitan area in Florida.

U.S. Census Bureau; 12/21/2010

POPULATION PROJECTIONS BY PLANNING COMMUNITY

Collier County is a prime location for your business destination. With its populate communities, incorporated and unincorporated alike, your business will have the chance to grow and prosper along with these communities. Collier County's population rises by an estimated one-third during the winter season; this seasonality traditionally lasts from November through April. Collier County's seasonal unincorporated population is projected grow by 28 percent reaching a total of 474,814 in 2030. Collier County's seasonal incorporated population is projected to reach 65,663 with a corresponding growth rate of 22 percent.

COLLIER COUNTY	2010 ESTIMATE	2012 PROJECTION	2013 PROJECTION	2014 PROJECTION	2015 PROJECTION
Corkscrew	4,550	6,705	8,055	9,425	10,815
Big Cypress	233	236	239	242	245
Central Naples	18,845	18,933	19,001	19,070	19,139
East Naples	22,320	22,346	22,370	22,394	22,355
Golden Gate	44,925	45,189	45,380	45,574	45,771
Immokalee	24,154	25,608	24,765	24,925	25,087
Marco Island (unincorporated)	1,219	1,224	1,225	1,227	1,228
North Naples	55,041	55,534	55,904	56,280	56,662
Royal Fakapalm	11,797	12,821	13,446	14,081	14,724
Rural Estates	34,739	34,887	34,996	35,107	35,219
South Naples	28,689	29,643	30,267	30,900	31,542
Urban Estates	38,658	39,266	39,709	40,158	40,614
COLLIER COUNTY	2010	2012	2013	2014	2015
		PROJECTION	PROJECTION	PROJECTION	PROJECTION
City of Naples	19,537	19,691	19,934	20,179	20,428
City of Marco Island	16,413	16,755	17,067	17,378	17,690
Everglades City	400	409	412	415	418

Source: Collier County Comprehensive Planning Department, Revised 6/2012

SEASONAL POPULATION ESTIMATE – COLLIER COUNTY, FLORIDA

	2010	2015	2020	2025	2030
		PROJECTION	PROJECTION	PROJECTION	PROJECTION
Unincorporated	343,593	367,730	404,827	440,714	474,814
Incorporated	43,590	46,552	49,687	52,869	55,903
Seasonal Total	387,183	414,282	454,514	493,583	530,717

**Incorporated areas are Naples, Marco Island and Everglades City; Unincorporated areas are by planning communities*

Source: Collier County Comprehensive Planning Department, 6/2012

During season, October – May 2010, seasonal population increases by 65,663 persons.

RACE

<u>RACE</u>	<u>2010</u>	<u>% OF TOTAL</u>
White	269,596	84%
African American	21,087	7%
American Indian	1,123	.05%
Asian	3,507	.5%
Native Hawaiian or Pacific Islander	125	0.0%
Two or More Races/other	26,082	8%
Total Population	318,537	100.0%
Hispanic or Latino	83,391	26%

**Hispanic or Latino is referred to by the U.S. Census Bureau as a person's self-identified origin. Their race was self-indicated and they were included in one of the above classified races.*

Source: U.S. Census Bureau, 2/16/2012

GENDER

	<u>Census</u>	<u>Census</u>	<u>2000-2010</u>	<u>2000-2010</u>
	<u>2000</u>	<u>2010</u>	<u>Numeric Change</u>	<u>Percent Change</u>
Female	125,521	163,026	37,505	30%
Male	125,856	158,494	32,638	26%
Total	251,377	321,520	70,143	28%

Source: U.S. Census Bureau, 2/16/2012

AGE DISTRIBUTION

<u>AGE</u>	<u>ESTIMATE</u>	<u>ESTIMATE</u>	<u>PROJECTION</u>	<u>NUMERIC CHANGE</u>	<u>% CHANGE</u>
	<u>2008</u>	<u>2009</u>	<u>2010</u>	<u>2008-2015</u>	<u>2008-2015</u>
0-4	20,160	20,110	16,836	2,400	12%
5-19	50,750	50,778	52,341	9,230	18%
20-34	47,410	47,390	48,066	10,340	22%
35-54	75,540	75,000	76,386	3,300	4%
55-64	62,270	62,900	42,940	9,750	16%
65+	59,400	62,380	84,951	19,780	33%
TOTAL	315,530	318,558	321,520	54,800	1.05%
MEDIAN AGE	45.75	46.37	46.90	+1.39	+3%

Source: US Census Bureau, 2/16/2012

2010 MEDIAN AGE – SOUTHWEST FLORIDA

<u>SOUTHWEST FLORIDA</u>	<u>AGE</u>
Collier County	46.9
Charlotte County	54.6
Glades County	42.2
Hendry County	30.6
Lee County	44.0
Sarasota County	50.7
Florida	39.7

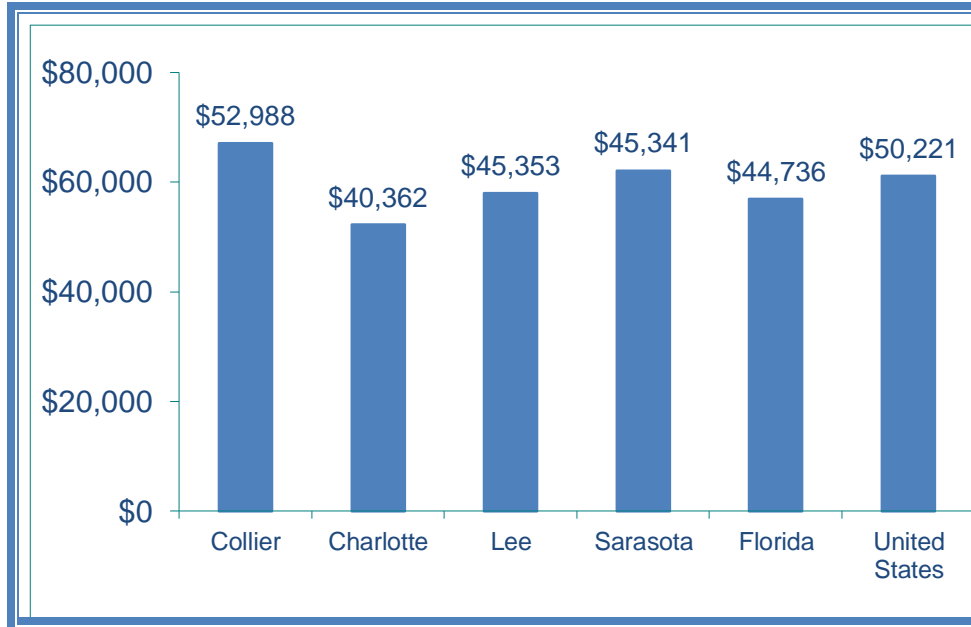
Source: U.S. Census Bureau, 12/21/2010

Southwest Florida Total Population Change 2000-2010 2000 and 2010				
	Total Population		Change, 2000-2010	
Area	April 1, 2000*	April 1, 2010	Level	Percent
Collier County	251,377	321,520	70,143	27.9%
Everglades	479	400	-79	-16.5%
Marco Island	14,879	16,413	1,534	10.3%
Naples	20,976	19,537	-1,439	-6.9%
Charlotte County	141,627	159,978	18,351	13.0%
Punta Gorda	14,344	16,641	2,297	16.0%
Glades County	10,576	12,884	2,308	21.8%
Moore Haven	1,635	1,680	45	2.8%
Hendry County	36,210	39,140	2,930	8.1%
Clewiston	6,460	7,155	695	10.8%
Labelle	4,210	4,640	430	10.2%
Lee County	440,888	618,754	177,866	40.3%
Bonita Springs	32,797	43,914	11,117	33.9%
Cape Coral	102,286	154,305	52,019	50.9%
Fort Myers	48,208	62,298	14,090	29.2%
Fort Myers Beach	6,561	6,277	-284	-4.3%
Sanibel	6,064	6,469	405	6.7%
Sarasota County	325,961	379,448	53,487	16.4%
Longboat Key	5,012	4,490	-522	-10.4%
North Port	22,797	57,357	34,560	151.6%
Sarasota	52,715	51,917	-798	-1.5%
Venice	17,864	20,748	2,884	16.1%
<i>Source: Florida Department of Economic Opportunity, Florida Census 2/16/2012</i>				

INCOME CHARACTERISTICS

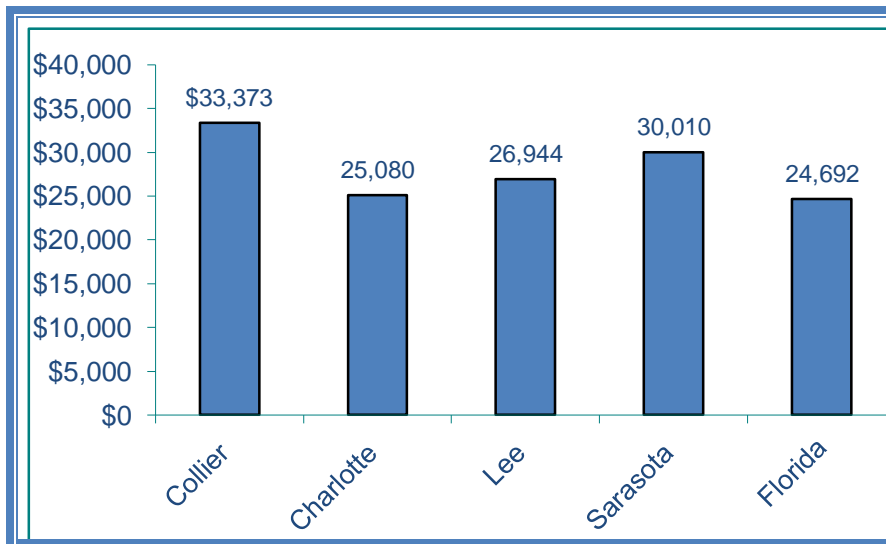
Collier County is an attractive destination your business as Collier County's median household income of \$52,988 is the highest in the Southwest Florida region. It is also higher than the state and national average of \$44,736 and \$50,221 respectively. The per capita income of \$33,373 is the highest in the Southwest Florida region outpacing the state's per capita income of \$24,692 and the nation's per capita income \$26,409.

2009 MEDIAN HOUSEHOLD INCOME



Source: U.S. Census Bureau; 2009 American Community Survey; Economic Characteristics 12/21/2010

2009 PER CAPITA INCOME



Source: Bureau of Economic Analysis, 12/21/2010

ECONOMY

Between 2010 and 2011 the Naples-Marco Island MSA employment has grown 3.1 percent. The area's top five highest paid occupations are physicians and surgeons, chief executives, general practitioners, engineering managers and podiatrists. Area businesses come in all sizes from small to large and everything in between. In 2008 within the Southwest Florida region there were 20,722 businesses that employ 1 to 9 people, 2,250 businesses that employ 10-100 people, 113 businesses that employ 100-499 people, and 7 businesses that employ 500 plus people. The area employed 99,471 people in all private industry sectors and 10,771 in government.

LABOR FORCE GROWTH

<u>LABOR FORCE</u>	<u>2007</u>	<u>2009</u>	<u>2010</u>	<u>2011</u>	<u>Numeric Change 2010-2011</u>
Collier County	152,288	144,634	143,871	148,485	4,614
Charlotte County	68,262	68,780	68,606	70,507	1,901
Glades County	4,615	4,428	4,551	5,201	650
Hendry County	17,983	17,123	16,847	17,894	1,047
Lee County	287,090	276,523	274,086	282,699	8,613
Sarasota County	178,448	166,721	166,706	161,271	-5,435
Florida	9,148,000	9,209,000	9,225,000	9,249,000	24,000
United States	153,124,000	153,539,000	153,698,000	153,617,000	-8,100

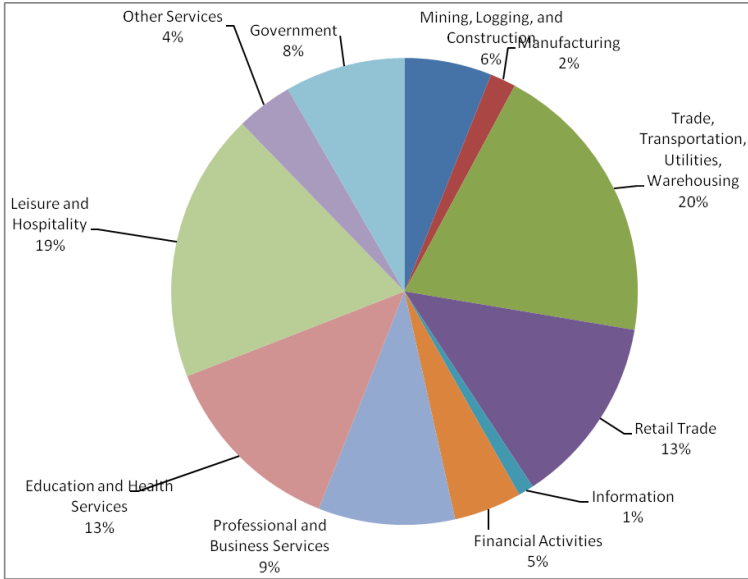
Source: Florida Department of Economic Opportunity, Labor Market Statistics; Local Area Unemployment 6/2012

Unemployment Rate

	2006	2007	2009	2010	2011
Collier County	3.2%	4.4%	12.3%	12.4%	10.3%
Charlotte County	3.5%	5.2%	12.9%	12.8%	10.8%
Glades County	4.0%	4.9%	12.6%	11.2%	10.2%
Hendry County	6.5%	7.5%	17.9%	15.9%	14.4%
Lee County	3.0%	4.7%	13.3%	13.4%	11.1%
Sarasota County	3.1%	4.3%	12.1%	12.0%	10.7%
Florida	3.4%	4.0%	12.2%	11.4%	10.5%
United States	4.6%	4.6%	9.3%	9.4%	8.5%

Source: Florida Department of Economic Opportunity, Labor Market Statistics; 6/2012

Rank	Occupation	Average Hourly Wage
1	Physicians and Surgeons	\$95.35
2	Chief Executives	\$83.66
3	Family and General Practitioners	\$78.80
4	Engineering Managers	\$78.78
5	Podiatrist	\$77.08
6	Sales Managers	\$36.21
7	Computer and Information Systems Managers	\$61.36
8	Sales Representatives, Wholesale and Manufacturing, and Scientific Products	\$60.70
9	Pharmacists	\$56.65
10	Financial Managers	\$53.78



DESCRIPTION OF NAICS DIVISIONS

Education and Health Services

- Health, social, and education services

Financial Activities

- Finance, insurance, and real estate

Government

- Public Administration

Information

- Periodicals, communications and Internet service providers

Leisure and Hospitality

- Accommodations, food services, and entertainment.

Manufacturing

Natural resources and Mining

- Agriculture, forestry, fishing, hunting, and mining

Other Services (minus public administration)

- Repair and maintenance shops and personal services

Professional and Business Services

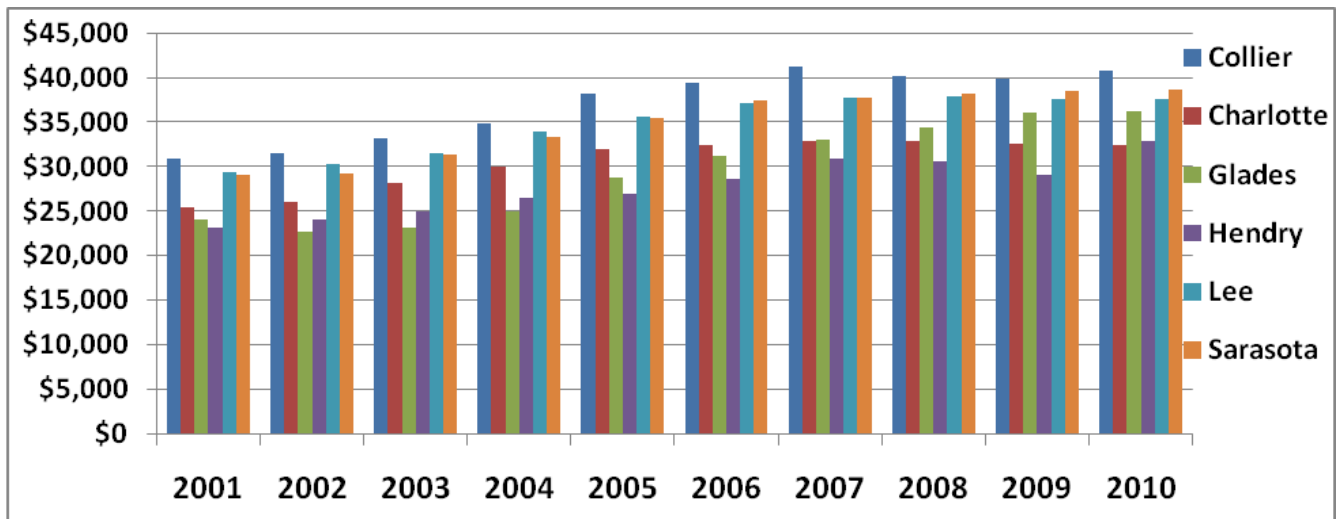
- Management, scientific and technical services, and administrative support

Trade and Transportation Utilities

- Truck transportation, warehouse storage, and retail trade

Source: Florida Agency for Workforce Innovation, Labor Market Statistics, 06/12

AVERAGE WAGE INCREASE 2001-2010



	2001	2010	Percentage Increase
Collier	\$30,838	\$40,807	32%
Charlotte	\$25,412	\$32,382	27%
Glades	\$24,053	\$36,193	50%
Hendry	\$23,119	\$32,937	42%
Lee	\$29,428	\$37,605	28%
Sarasota	\$29,029	\$38,660	33%

EMPLOYMENT AND WAGES BY NAICS SECTORS

<u>Industry</u>	<u>Collier County Employment</u>	<u>Collier County Average Wage</u>
Construction	14,284	\$35,165
Retail Trade	17,217	\$23,919
Accommodations and Food Services	11,989	\$18,443
Health Care and Social Assistance	11,043	\$35,679
Administrative & Support, and Waste Management and Remediation Services	7,851	\$27,178
Agriculture, Fishing, Forestry, and Hunting	6,983	\$14,444
Art, Entertainment, and Recreation	5,312	\$26,288
Professional, Scientific, and Technical Services	4,191	\$49,587
Other Services (except Public Administration)	4,561	\$22,866
Finance and Insurance	3,555	\$63,555
Real Estate, Rental, and Leasing	2,500	\$34,922
Wholesale Trade	2,575	\$42,311
Manufacturing	2,908	\$33,116
Information	1,706	\$44,922
Transportation and Warehousing	1,962	\$33,203
Educational Services	1,037	\$40,072
Management of Companies and Enterprises	451	\$127,905
Unclassified	118	\$46,255
Utilities	277	\$39,733
Mining	59	\$41,610
Total All Private Industries	99,471	\$30,401
Total Government	10,771	\$107,066
Total All Government and Private Industries	110,242	\$137,467

Source: Florida Agency for Workforce Innovation; Quarterly Census of Employment and wages 2009, 12/23/2010

TOP 25 LARGEST EMPLOYERS COLLIER COUNTY, FLORIDA

Rank	Company	Employees
1	Naples Community Hospital	4,000
2	Ritz-Carlton-Naples	1,110
3	Garquilo Inc.	1,110
4	Arthrex Inc.	1,056
5	Collier County's Sheriff's office	1,029
6	Home Team Inspection Svc.	900
7	Publix Super Markets	800
8	Marriott	700
9	Naples Grande Beach Resort	700
10	Downing Frye Realty	550
11	Gulf Bay Group Co.	500
12	Moorings Park – Home Health	500
13	Continental Transportation Svc	500
14	Bentley Village	470
15	John R. Wood Realtor	400
16	U.S. Post Office	380
17	Finnegan Team	375
18	Naples Beach Hotel & Golf Club	350
19	Walmart	325
20	Cemex	301
21	Home Depot	300
22	Naples Lake Country Club	300
23	Nordstrom	300
24	Seminal Casino Immokalee	300
25	Commercial Concrete System	290

Source: ReferenceUSA, study received from FGCU;
12/21/2010

COMPANY SIZE COLLIER COUNTY, FLORIDA

EMPLOYEES	BUSINESSES	% OF TOTAL
1 to 9	36,561	92%
10 to 99	2,223	8%
100 to 499	105	.01%
500+	8	.001%
Total	38,897	100%

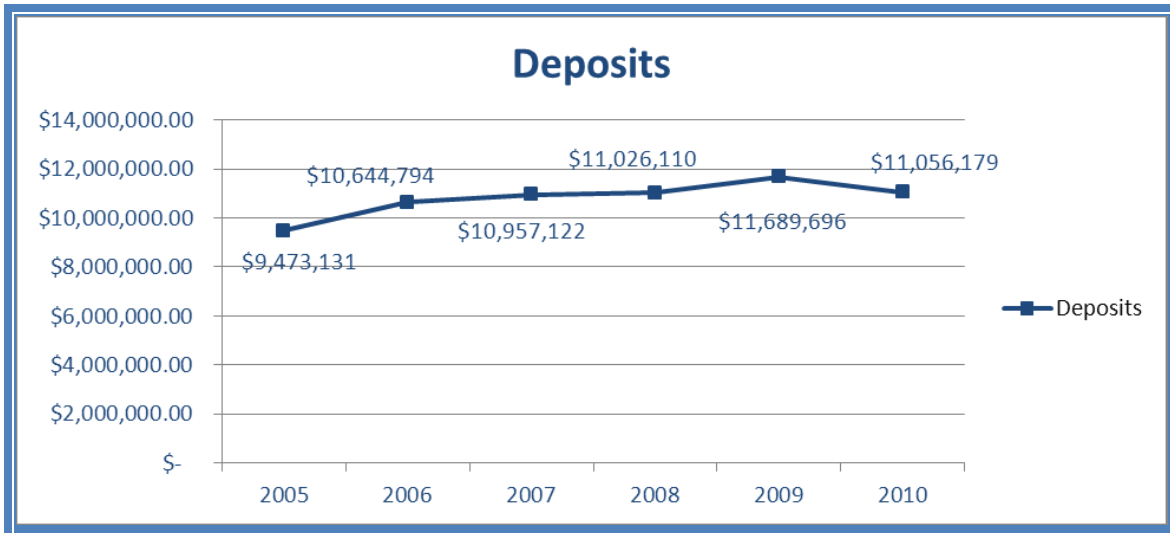
Source: youreconomy.org, 2012

Credit creation is an integral part of a bank to create business growth. Collier County has 151 bank branches in the area with total deposits amounting to \$9.9 billion under management. These deposits can be lent in the form of loans to help fund business activities and take on more expansive projects. From 2005 to 2011 Deposits have grown 5 percent.

TOP 10 BANKS BY MARKET SHARE IN 2011

Institution	#of Offices	Deposits	Market Share
FIFTH THIRD BANK	20	\$1,840,258	18.44%
WELLS FARGO BANK NA	15	\$1,323,268	13.26%
BANK OF AMERICA NA	17	\$1,094,583	10.97%
REGIONS BANK	14	\$693,682	6.95%
IBERIABANK	7	\$623,371	6.25%
KEYBANK NATIONAL ASSN	1	\$592,792	5.94%
SUNTRUST BANK	9	\$415,600	4.16%
NORTHERN TRUST NATIONAL ASSN	4	\$366,417	3.67%
EVERBANK	2	\$291,374	2.92%
BRANCH BANKING & TRUST	6	\$245,692	2.46%
All Other	55	\$2,493,905	24.98%
Total	151	\$9,980.942	100.00%

Source: Federal Deposit Insurance Corporation, 12/23/2011



Source: Federal Deposit Insurance Corporation, 12/23/2010

EDUCATION

Collier County is an ideal spot to bring your family. It's educational system is making headway on developing and cultivating the young minds of tomorrow. Collier County has 50 public schools with a total enrollment of 43,492 students. Each of Collier County's 51 schools is accredited by AdvanceED. In 2007 the county won an award for best financial management practices for the school system. More importantly 55 percent of the county's public school teachers have advanced degrees and have 11.6 years experience. Collier County has seen enrollment grow 11.7 percent from 2002 to 2009 due to its effective practices. In 2009, mean SAT scores 1449. In 2009, 10 percent of Collier County's population has a high school degree or higher, while 30.60 percent have attained a college degree or higher.

2005-2009 SOUTHWEST FLORIDA
EDUCATION ATTAINMENT

Southwest Florida	High School Grad or Higher	College Grad or Higher
Collier County	54.10%	30.60%
Charlotte County	67.20%	20.08%
Lee County	61.80%	24.90%
Glades County	62.60%	10.80%
Hendry County	53.20%	8.20%
Sarasota County	61.00%	28.90%
Florida	59.30%	25.60%

Source: U.S. Census Bureau, 1/02/11

2011 SAT RESULTS

	Mean SAT Score
Collier County	1442
Charlotte County	1514
Glades County	1352
Hendry County	1375
Lee County	1447
Sarasota County	1538
Florida	1435
United States	1509

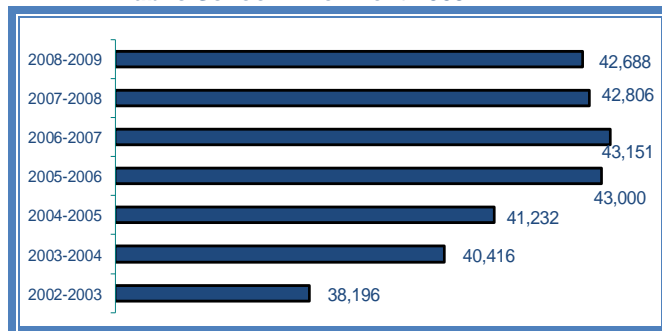
Source: FLDOE.org, 02/12/12

Public Schools in Collier County

Collier County Schools	
Elementary	29
Middle	10
High School	8
Everglades (K-12)	1
Charter	3
Total Schools	51
Total Enrolled Students	43,429

Source: Collier County Public Schools, 02/12/12

Public School Enrollment 2009



Source: Collier County Public Schools, 01/02/11

- Collier County School District and all of its schools are accredited by AdvanceED, the parent organization for the Southern Association of Colleges and Schools Council on Accreditation and School Improvement (SACS CASI).
- In 2011 4880 students were enrolled in Advanced Placement courses with 43% of students passing.
- High School Career Academies are schools within a school. The Career Academies expose high school students to various career paths such as Engineering, Biomedical Technology, and Information Technology.
- Of the district's 3,168 teachers, 55% hold advanced degrees with an average of 11.6 years of experience.
- The School District of Collier County has 51 schools including three charter schools and three new schools. The district serves a total student population of nearly 43,000. There are 29 elementary schools, 10 middle schools, 8 high schools, and a Pre-K thru 12 school (Everglades City School). There are also 12 Alternative School Programs.

TWO AND FOUR YEAR COLLEGES AND UNIVERSITIES

Ave Maria University is a newly established Catholic institution of higher education offering liberal arts oriented baccalaureate degrees in theology, philosophy, biology, political science, history, literature, economics and classics; as well as graduate degrees in theology (M.T.S.) and exceptional child education (M.A.E.E.). The institution also features a vibrant and dynamic student life program.

Ave Maria University

5050 Ave Maria Blvd.
Ave Maria, FL 34142
Phone: 239.280-2500
Fax: 239.352-2392
www.avemaria.edu

Barry University tailors over 60 undergraduate programs and 50 graduate degrees, to meet the needs of the Southwest Florida workforce. The University is accredited by the commission on Colleges of the Southern Association of Colleges and Schools to award Bachelor's, Master's Specialist, and Doctoral degrees. Barry University's main campus is in Miami, and Barry currently offers programs on Florida's West Coast in Fort Myers, Bradenton and in cooperation with Educational partnerships at Edison State College, St. Petersburg College and South Florida Community College in Avon Park.

Barry University

8099 College Parkway, Bldg. Q, Howard Hall
Fort Myers, FL 33919
Phone: (239)278-3041 or (800) 338-2279
Fax: (239) 278-3346
www.barry.edu

Edison State College has served Collier County since 1973. The current Collier County Campus located in Lely opened in March of 1992. Edison offers courses of study for degrees of Associate in Arts and Associate in Science. The College also offers many certificate programs, as well as non-credit continuing education classes for the working professional. It offers a full range of programs and services on each of its three campuses, Collier, Lee, and Charlotte. Edison brings higher education within reach of the entire five-five county district served by the college. Overall, Edison provides classes for 14,000 credit and 15,000 non-credit students annually.

Edison State College

7007 Lely Cultural Parkway
Naples, FL 34113
Phone: (239) 732-3700
Fax: (239) 732-3761
Email: inquiry@edison.edu
www.edison.edu

Florida Gulf Coast University (FGCU) is Florida's 10th accredited public university located just east of Interstate 75 between Naples and Fort Myers at exits 123 and 128. Degree programs are offered in arts and sciences, business, education, health professions and public and social services, with graduate programs in health, public administration, education, social work, and business. The 760-acre campus has attracted nearly 10,000 students, both locally and nationally. The 4500-seat Alico Arena hosts Eagle basketball as well as other campus and community events. Scholar athletes compete in men's and women's basketball, tennis, golf, cross country, and men's baseball and women's softball. The apartment style campus housing along the lakefront accommodates more than 1,200 students.

Florida Gulf Coast University

10501 FGCU Blvd. S
Fort Myers, FL 33965-6565
Phone: (239) 590-1000 or (800) 590-FGCU
Fax: (239) 590-7894
www.fgcu.edu/cob/cli/

Hodges University is a four-year degree granting college with locations in Naples and Ft. Myers, offering 12 associate degrees, 12 bachelor degrees, 8 graduate degrees, and 17 online degrees. Specifically designed programs and special courses are also available to businesses and professional firms seeking instruction or personalized seminars.

Hodges University

2655 Northbrooke Drive
Naples, FL 34119
Phone: (239) 513-1122 or (800) 466-8017

Fax: (239) 513-9054
<http://www.hodges.edu/>

Nova Southeastern University is the largest independent institution of higher education in the Southeast and is the 10th largest independent institution nationally. NSU's Southwest Florida Student Education Center recently opened in the spring of 2004. NSU awards associate's bachelors, master's, educational specialist, doctoral, and first-professional degree in a wide range of fields. The university is comprised of undergraduate, graduate and professional schools of osteopathic medicine, pharmacy, optometry, allied health and nursing, medical sciences, dental medicine, law, marine biology and oceanography, business and entrepreneurship, computer and information sciences, humanities, conflict resolution, family therapy, interdisciplinary studies, education, psychology and counseling, and family programs.

Nova Southeastern University
8951 Bonita Beach Rd., Suite 280
Bonita Springs, Florida, 34135
Phone: (800) 541-6682
www.nova.edu

TECHNICAL TRAINING PROGRAMS

Workforce Education (Collier County Public Schools) encompasses **Lorenzo Walker Institute of Technology (LWIT), Bethune Education Center (BEC), and Adult and Community Education**. LWIT and BEC are specialized post secondary schools designed primarily to provide workforce training in areas requiring less than a baccalaureate degree. Between them they offer over 80 programs and work with local businesses to develop customized employee training programs to meet their needs. The institute is approved by the Federal Aviation Administration, the Florida State Board of Nursing, and the Council on Occupational Education among others. Adult and Community Education encompasses adult basis education, English for Speakers of other languages and community education courses. In addition, the center also provides customized programs designed to meet specific training needs of requesting businesses.

3702 Estey Avenue
Naples, FL 34104
Phone: (239) 430-6900
Fax: (239) 642-6922
Email: rivroda@collier.k12.fl.us
www.collier.k12.fl.us

iTECH

The Immokalee Technical Institute is fully accredited with the Southern Association of Colleges and Schools and with the Council on Occupational Education. The Immokalee Technical Center is the newest technical training center in Florida. It focuses on state of the art career and technical education programs for high school students and adults. The center also offers ABE/GED and adult literacy programs.

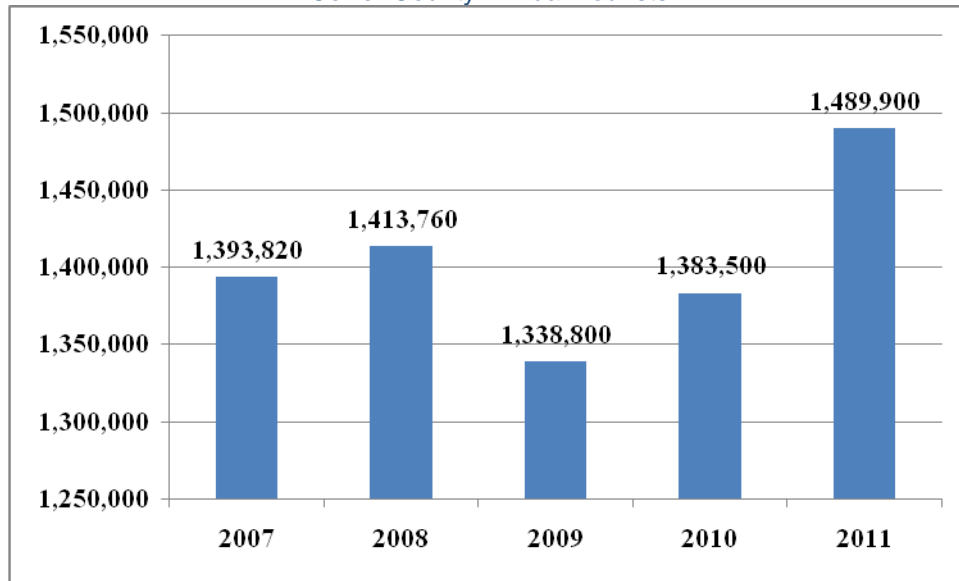
All programs have active business partners which will go beyond the advisory capacity. We envision businesses and/or associations "adopting" programs to serve as foundations for curriculum support, financial assistance, connecting activities (internships, job shadowing, speaking, professionals in residence, etc.), and permanent job placement for graduates.

508 North 9th Street
Immokalee, FL 34142
Phone: 239-377-9900
www.iTECH.edu

TOURISM

Tourism is a key employer in Collier County. In 2011, Collier County had 1,489,900 tourists come to the area. Total expenditures from tourism in 2011 was \$865,184,700. Average tourism expenditures on a per day basis are \$129.04 dollars. Tourism helped create 30,600 jobs and supported wages up to \$897,093,011. All of this and more has led to an economic impact on the Collier County of \$1,289,990,388. in 2011.

Collier County Annual Tourists



Source: Naples Marco Island & Everglades Convention and Visitors Bureau, 06/2012

Economic Impact of Tourism in 2010 & 2011

Collier County	2010	2011
Number of Visitors	1,383,500	1,489,900
Expenditures	\$782,078,400	\$865,184,700
Economic Impact	\$1,166,078,894	\$1,289,990,388
Per day Expenditures	\$122.89	\$129.04
Average Income	\$142,708	\$142,032
Tourism Tax Revenue	\$12,973,646	\$13,802,806

Source: Naples Marco Island & Everglades Convention and Visitors Bureau, 06/2012

Economic Impact of Tourism in 2011

Collier County	2011
Average Age of Visitor	48.1
Hotel Occupancy Rate	66.7%
Annual Hotel Nights	2,187,500
Tourism Jobs	30,600
Visitor Sales	\$82,582,600
Supported Wages	\$897,093,011

Source: Naples Marco Island & Everglades Convention and Visitors Bureau, 10/11/11

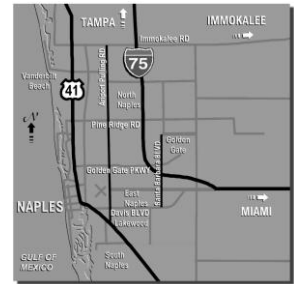
TRANSPORTATION

Southwest Florida's high employment concentration, services, and retail trade signify a large demand for consumer goods. The high volume of inbound freight traffic can benefit Southwest Florida companies that ship goods from the region as freight carriers offer discounts to stimulate backhaul demand.

MAJOR HIGHWAYS

Four major U.S. interstate highways provide direct access to all major markets in Florida. Interstate 75 extends from Canada to Naples, before turning to the east Coast and connecting with the Florida Turnpike.

- I-75 north/south
- I-75 east from Naples to Fort Lauderdale with connectors to I-95
- U.S. 41 north/south, then east to Miami



Driving Distance from Naples

Daytona 243 miles
 Jacksonville 348 miles
 Miami 110 miles
 Orlando 189 miles
 Tallahassee 425 miles
 Tampa 165 miles

State Roads

U.S. 41 (Tamiami Trail)
 SR84 (Davis Blvd)
 SR951 (Collier Blvd)
 SR29 (Intersection of 41 to Hendry)
 SR82 (From SR29 to Hendry County)

RAILWAYS

Seminole Gulf Railway operates over 100 miles of trackage in Florida from a connection with the national rail system at Arcadia down to North Naples. Seminole Gulf is the only freight railroad in Southwest Florida, hauling much of the region's building materials, newsprint, LP gas, pulpwood, logs, stone and other commodities. Rail Head is a public delivery facility that provides ramps to load or unload freight cars.

Seminole Gulf Railway

4110 Centerpointe Drive
 Suite 207
 Fort Myers, FL 33916
 (239) 275-8487
<http://www.semigulf.com>
 Source: Seminole Gulf Railway,

DEEP WATER PORTS OF ENTRY

Florida is home to 14 deepwater ports and numerous other port facilities. Those nearest to Collier County include Port Everglades, the Port of Miami, and the Tampa Port.

Port Everglades 1850 Eller Drive Ft. Lauderdale, FL 33316 (954) 523-3404 http://www.porteverglades.org/index.php	Port of Miami-Dade 1015 N. America Way Miami, FL 33132 (305) 347-4800 http://www.miamidade.gov/portofmiami/	Tampa Port Authority 1101 Channelside Drive Tampa, Florida 33602 (813)-905-7678 http://tampaport.com
---	--	--

Source: Port Everglades, 2009, Source: Port of Miami, 2009, Source: Tampa Port Authority, 2009

AIR SERVICE

Southwest Florida International Airport

Southwest Florida International Airport
11000 Terminal Access Rd., Ste. 8671
Fort Myers, FL 33913
Phone: (239) 590-4800
E-mail: contactus@flylcpa.com
<http://www.flylcpa.com>

Southwest Florida International Airport ranks among the top 50 U.S. airports for passenger traffic and enjoys service from more than 20 airline partners providing nonstop flights to popular destinations throughout the U.S., Canada and Germany. RSW served more than 8 million passengers in 2007 and offers all the conveniences that can be expected for a hassle-free and enjoyable customer experience.

In 2005, a new state-of-the-art facility opened to accommodate a record number of travelers to the region and expand as airport growth demands. It is one of the newest terminals in the nation built with careful attention, offering comfort and convenience to travelers and people using the facility.

Domestic Carriers

AirTran Airways
American Airlines
American Eagle
Cape Air
Comair (Delta)
Continental Airlines
Continental Connection
Delta Airlines

JetBlue Airways
Northwest Airlines
Southwest Airlines
Spirit Airlines
Sun Country Airlines
United Airlines
USA 3000 Airlines
US Airways

International Carriers

Air Berlin/LTU
Air Canada

WestJet

Cargo Carriers

DHL
Federal Express (FedEx)
United Parcel Service (UPS)
U.S. Postal Service

Source: Lee County Port Authority, 2009

Southwest Florida International Airport (RSW)

-Located off Interstate 75 at Exit 128 (northbound) and Exit 131 (southbound)

-RSW ranks among the 50 busiest airports in passenger traffic in the U.S.

-Served more than 8 million passengers in 2007

-One 12,000 foot runway

-Customs clearance capacity of 400 passengers an hour, allowing the airport to handle the passenger loads of wide-body planes from Europe

-Received Foreign Trade Zone designation in June 1996

Miami International Airport, Fort Lauderdale Airport, Palm Beach International Airport, Tampa International Airport, and Orlando International Airport are all within a 1 ½ hour to 3 hour drive from Naples offering daily service to more than 150 destinations worldwide.

GENERAL AVIATION AIRPORTS

NAPLES AIRPORT AUTHORITY

160 North Aviation Drive
Naples, FL 34104
Phone (239) 643-0733
Fax; (239) 643-4084
Email: info@flynaples.com
http://www.flynaples.com



Naples Municipal Airport

The Naples Municipal Airport is a fully certificated air carrier airport. The airport also provides FBO services for general aviation including fueling and catering. It is home to charter airlines, aircraft maintenance facilities, a restaurant, fire/rescue services, mosquito control, car rental agencies, the Collier County Sheriff's Aviation Unit, flight schools, the Humane Society, and over 40 additional aviation and non-aviation businesses.

The airport encompasses approximately 732 acres of land, approximately two miles northeast of Old Naples with convenient access to major roads and Interstate 75.

Source: Naples Airport Authority, 2004

COLLIER COUNTY AIRPORT AUTHORITY

2003 Mainsail Drive
Naples, FL 34114
Phone: (239) 642-7878
Fax: (239) 394-3515



Immokalee Regional Airport/ Florida Tradeport

The Florida Tradeport is free from congested airspace and is centrally located, making it a drive to numerous attractions in Collier County.

The airport has two runways 5,000 ft. by 150 ft. asphalt with lights.

Chevron Fuel 100 LL, Jet A available 24 hours a day.

The Florida Tradeport includes an industrial park, manufacturing and technology centers, and is within a Foreign Trade Zone, an EB-5 Investor Visa targeted employment center, a HUB Zone, an Empowerment Zone, and an Enterprise Zone.

short

Florida Tradeport Customs Processing Facility

The Immokalee Regional Airport at the Florida Tradeport is a designated U.S. Port of Entry.

Customs processing can be completed on goods entering through the Immokalee Regional Airport at the Florida Tradeport.

Everglades Airpark

Everglades Airpark is within walking distance to Everglades City, the Everglades National Park and other local attractions such as airboat rides, boat tours, fishing, camping and canoeing.

The airport has one runway 2,400 ft. by 50 ft. asphalt with lights.

Chevron Fuel 100 LL Self Services 24 hours a day.

Marco Island Executive Airport

The Marco Island Executive Airport is a popular point of arrival for the greater Naples area locations.

It is conveniently located to reach Naples, Marco Island, Goodland, Isles of Capri and the Everglades National Park.

The airport has one asphalt runway 5,000 ft. by 100 ft., with pilot controlled lights.

Chevron Fuel 100 LL, Jet A with additive available from 7:00 A.M. to 7:00 P.M., seven days a week.

Source: Collier County Airport Authority, 2003

Business and Commerce Parks

There are 24 industrial parks and parks of commerce located throughout Collier County. Each Park is easily accessible to Interstate 75 for connection to major air transportation and water ports. Collier County's zoning allows the flexibility of properties of 19-acres, or more, to be zoned as Research and Technology parks, which are based on commerce parks with advanced infrastructure to attract technology based businesses. For more information about finding a site for your business, contact Collier Business & Economic Development office at 239-252-8990

North Naples

- Creekside Commerce Park
- Jaeger Industrial Park
- J&C Industrial Park
- North Collier Industrial Park
- North Naples Industrial Park
- North Naples Research and Technology Park
- Pine Ridge Industrial Park
- Railhead Industrial Park
- Trade Center Way of Naples

Golden Gate

- City Gate Industrial Park
- Gator Gate Industrial Park
- Tollgate Commercial Center
- White Lake Corporate Park

South Naples

- ASGM Business Center of Naples
- Collier County Production Park
- Collier Park of Commerce
- Corporate Square
- East Naples Industrial Park
- Naples Big Cypress Industrial Park
- Naples Production Park

Eastern Collier County / Immokalee

- Tradeport Technology Park
- Eastover Industrial Park
- Florida Tradeport

The Immokalee Regional Airport and Industrial Park include two Manufacturing Technology Centers, each one of approximately 10,500 sq. ft. These areas house a variety of manufacturing tenants. The centers are designed and share services needed to launch or grow a business and include a shared tool room, calibrator room, bonded warehouse, powder coating area, and on-site security.

The Immokalee Regional Airport and Industrial Park offers leases and is located within:

- Foreign Trade Zone
- Hub Zone
- Foreign Entrepreneurial Investment Zone
- Florida Enterprise Zone

Source: Collier County Airport Authority, 2006

Business Resources

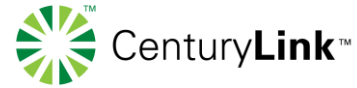
Comcast

Customer Service: (239) 793-3577
or (800) 266-2278
www.comcast.com



CenturyLINK

Customer Service 1-877-290-5458
www.centurylink.com



TECO/Peoples Gas

Customer Service: (877) TECO-PGS
www.tecoenergy.com



Florida Power & Light

Customer Service: (239) 262-1322
or (800) 226-3545
Fax: (239) 434-1218
www.fpl.com



Lee County Electric Cooperative

Customer Service: (239) 995-2121
or (800) 282-1643
Fax: (239) 995-7904
www.lcec.net



NCH Healthcare System

The NCH Healthcare System is an alliance of more than 500 premier physicians and medical facilities in dozens of locations throughout Collier County and Southwest Florida (NCH Naples Hospital has 420 beds and North Collier Hospital has 128 beds).



The NCH team not only offers advanced comprehensive care, they embrace new, effective ideas in medical care and healing. The NCH Healthcare System offers advanced heart, cancer, obstetric, newborn and pediatric care, as well as a full continuum of almost every additional medical specialty needed by the residents and visitors of Southwest Florida.

One of NCH's achievements is the Shick Heart Center's Direct Infarct Angioplasty Program called "Save-A-Heart." As a result of this Program, NCH has one of the lowest heart attack mortality rates in the nation.

As the first and only comprehensive cancer care program in Southwest Florida, the new NCH Regional Cancer Institute features the most sophisticated treatment facilities, equipment, and technology available including IMRT (Intensified Modulated Radiation Therapy) linear accelerator, a CT scanner, and advanced equipment.

The NCH Healthcare System is second in the state to offer Cyberknife radio surgery. Cyberknife treats many lesions that may be considered inoperable or untreatable, giving many patients new hope. Cyberknife uses image-guided robotics to precisely and non-invasively destroy tumors and other lesions with multiple beams of high energy radiation.

The NCH Healthcare System performed the first robot-assisted surgery on the West Coast of Florida using the DaVinci Robot. This new technology makes recovery for patients easier, safer and faster.

Naples Community Campus

350 7th Street North
Naples, FL 34102
(941) 436-5000
www.NCHmd.org

North Naples Campus

11190 Health Park Blvd.
Naples, FL 34110
(941) 513-7000
www.NCHmd.org

Additional health care providers within 35 miles of Naples include the following:

Bonita Community Health Center

3501 Health Center Blvd.
Bonita Springs, 34135
(239) 949-1050
www.bonitahealthcenter.com

Gulf Coast Hospital

13681 Doctor's Way
Fort Myers, FL 33912
(239) 768-5000
www.gulfcoasthospital.com

Health Park Medical Center

9981 Health Park Circle
Fort Myers, Florida 33908
(239) 433-7799
www.leememorial.com

Lee Memorial Health System

2776 Cleveland Avenue
Fort Myers, FL 33901
(239) 332-1111
www.leememorial.com

Marco Medical Associates

40 Heathwood Drive
Marco Island, FL 34145
(239) 394-8234
www.nchhcs.org/body.cfm?id=140

Southwest Florida Regional Medical Center

2727 Winkler Ave
Fort Myers, FL 33901

Healthcare

Health Management Associates, Inc.

Based in Naples since 1985, Health Management Associates, Inc. is the premier owner and operator of acute-care hospitals in non-urban communities situated throughout the United States. HMA is dedicated to providing high-quality health care to its patients in the most cost-effective manner possible. The Company's goal is to ensure that each of its facilities provides a full range of medical services, thereby minimizing the need for patients to travel a significant distance to receive treatment at urban hospitals. Each HMA hospital plays a dynamic and vital role in the community it serves.



HMA has recently received a Certificate of need from the State of Florida to construct and operate the Collier Regional Medical Center, a 100-bed, full-service acute-care hospital in Collier County. The hospital is expected to cost \$75 million and create 300 to 500 jobs. HMA's services will include 24-hour a day emergency room services and obstetrical and pediatric services. The hospital will be located on Collier Boulevard, just south of Rattlesnake Hammock Road and north of Lely Cultural Boulevard.

HMA is familiar with health care in Florida, operating 14 hospitals throughout the State with the closest hospitals being the 88-bed Lehigh Regional Medical Center in Lehigh Acres, FL and the "Top 100," 156-beds Charlotte Regional Medical Center in Punta Gorda, Florida.

Health Management Associates, Inc.

5811 Pelican Bay Boulevard, Suite 500
Naples, FL 34108
Phone: (239) 598-3131
Fax: (239) 597-5794
www.HMA-Corp.com

Charlotte Regional Medical Center

809 East Marion Avenue
Punta Gorda, FL 33950-3898
Phone: (941) 639-3131
Fax: (941) 637-2579

Lehigh Regional Medical Center

1500 Lee Boulevard
Lehigh Acres, FL 33936
Phone: (239) 369-2101
Fax: (239) 368-4510

Collier Regional Medical Center

7007 Lely Cultural Parkway
Naples, FL 34113
Phone: (239) 354-6000
Fax: (239) 417-8055

Physicians Regional

Physicians Regional Healthcare System is comprised of two hospitals, Physicians Regional-PineRidge Road and Physicians Regional – Collier Boulevard, each with its own unique mark on the Southwest Florida landscape.

Physicians Regional-Pine Ridge

Physicians Regional-Pine Ridge has been part of Southwest Florida community since 1999. Formerly Cleveland Clinic Florida, the hospital was purchased in May 2006 by Health Management Associates, Inc. (HMA).

Physicians Regional

6101 Pine Ridge Road
Naples, FL 34119
(239) 348-4000
www.physiciansregional.com

Physicians Regional – Collier Boulevard

Physicians Regional-Collier Boulevard is Southwest Florida's newest hospital and HMA's first de nova hospital. The opening of Physicians Regional –Collier Boulevard brought vital services like obstetrics and pediatrics to East Naples and Marco Island, and expanded healthcare choices for everyone in the region.

Physicians Regional – Pine Ridge

6101 Pine Ridge Road
Naples, Florida 34119
(239) 348-4000

Physicians Regional – Collier Boulevard

8300 Collier Boulevard
Naples, Florida 34114
(239) 348-4040

Community

Philharmonic Center for the Arts is the premier performing arts hall in Southwest Florida, hosting more than 400 events a year, including classical and popular music concerts, opera, dance, Broadway and more. The Philharmonic Center is home to the Naples Philharmonic Orchestra, a nationally recognized symphonic ensemble, which performs a full season of classical, pop and chamber music. The orchestra regularly hosts internationally acclaimed soloists and guest conductors. Also in the Philharmonic Center are four museum quality art galleries. The Philharmonic Center also presents numerous family and children's programs and an extensive lecture series.

Philharmonic Center for the Arts
5833 Pelican Bay Blvd.
Naples, Florida 34108
Box Office: (239) 597-1900 • Business Office: (239) 597-1111 • Fax: (239) 597-7856
www.thephil.org

United Arts Council of Collier County is Collier County's official arts agency as designated by the State of Florida. The Council's mission is to enrich lives and strengthen the Naples community through the power of the arts. Approximately 40 organizations, including museums and educational institutions, fall under the UAC umbrella. The Council provides information and services for over 500 artists and musicians and the nearly 200 art galleries in the Naples area.

United Arts Council of Collier County
2335 Tamiami Tr. N. Suite 504
Naples, FL 34103
Phone: (239) 263-8242 • Fax: (239) 263-3830 • www.uaccollier.com

Naples Botanical Gardens is an extraordinary 170 acres of lakes and land that began its ultimate transformation in June 2008. The mission of Naples Botanical Garden is connecting people and plants. These gardens showcase an artful, colorful blend of Florida native and non-native plants and features plants that are well adapted and easy to grow in Southwest Florida's unique environments.

Naples Botanical Gardens
4820 Bayshore Drive
Naples, FL 34112
Phone: (239) 643-7275 • Fax: (239) 649-7306 • www.naplesgarden.org

The Conservancy of Southwest Florida is headquartered on a 21-acre nature preserve in the heart of Naples. The Nature Center offers a unique and exciting variety of activities for visitors of all ages to discover nature and the natural resources of Southwest Florida. From interactive exhibits in the Discovery Center and unique gifts in the Nature Store, to guided electric boat rides or a stroll down a nature trail designated Site #69 on the Great Florida Birding Trail, a day at the Conservancy is a great experience for **all!**

The Conservancy of Southwest Florida
1450 Merrihue Drive
Naples, Florida 34102
Phone: (239) 262-0304 • Fax: (239) 262-0672 • www.conservancy.org

Rookery Bay National Estuarine Research Reserve is located at the northern end of the Ten Thousand Islands on the gulf coast of Florida, and represents one of the few remaining undisturbed mangrove estuaries in North America. The 110,000-acre reserve is open to fishing, hiking, boating, and a variety of outdoor activities. The Environment Learning Center provides a state-of-the-art facility to address the changing needs of our rapidly growing community and the pristine estuary.

Rookery Bay National Estuarine Research Reserve
300 Tower Road
Naples, Florida 34113
Phone: (239) 417-6310 • Fax: (239) 417-6315 • www.rookerybay.org

COMMUNITY

Collier County Museums are established in Naples, Everglades City, and Immokalee. The Naples Museum, a five-acre site, features two exhibition galleries, historic homes, a native plant garden, and research library. The Museum of the Everglades is housed in a restored commercial laundry built in 1927. The museum focuses on "Old Florida" history and the County's beginnings. The Immokalee pioneer Museum at Roberts Ranch is a living history site that will focus on pioneer settlements, cattle ranching, and farming.

Collier County Museums

3301 Tamiami Trail East
Naples, FL 34112
Phone: (239) 252-8476 • Fax: (239) 252-8580

Glorious Beaches. Naples is a seaside paradise with 17 miles of white sandy beaches along the Gulf of Mexico. Each beach has its own unique personality created by its physical characteristics and the life of the communities adjacent to it.

Golf. Naples is often called the *Golf Capital of the World* with nearly 100 golf courses designed by some of the world's leading golf course architects. Naples has the second most golf holes per capita in the nation, behind Myrtle Beach, SC. Although many courses are private, there are still dozens of public courses from which to choose.

Boating & Fishing. The Naples area is a boater's heaven. Several cruise lines offer eco-tours that cruise the area's backwaters, or that sail past the area's waterfront estates for lunch or dinner. Fishing charters are available or you can arrange for small-group and private charters. Canoe and kayak rentals are ideal for self-guided excursions through quiet waterways.

Shopping and Dining. Historic shopping districts, waterfront plazas, and exclusive boutiques make the experience of shopping in Naples one-of-a-kind.

Other Activities. Plenty of entertainment and special events keep things lively in Naples. At the **Germain Arena**, the East Coast Hockey League's Florida Everblades play a 72-game schedule from October to March, with league playoffs from April to June. In addition, TECO has hosted Disney on Ice, the Ringling Brothers Circus, Sting, Elton John, Don Henley and the FireCats, Arena Football II.

Germain Arena

11000 Everglades parkway
Estero, FL 33928
Phone: (239) 948-7825 • Fax: (239) 948-2248 • www.germainarena.com

National Parks

www.nps.gov
Big Cypress National Preserve
Phone: (239) 695-2000 • Fax: (239) 695-3901
Everglades National Park
Phone: (305) 242-7700 • Fax: (305) 242-7711
Rookery Bay National Estuary
Florida Panther National Wildlife Refuge
10,000 Islands National Wildlife Refuge

State Parks

www.dep.state.fl.us/parks

- Collier-Seminole State Park
Phone: (239) 394-3397 • Fax: (239) 394-5113
- Fakahatchee Strand Preserve State Park
Phone: (239) 695-4593 • Fax: (239) 695-4947
- Delnor-Wiggins Pass State Park
Phone : (239) 597-6196 • Fax: (239) 597-8223
- Corkscrew Swamp Sanctuary
Phone: (239) 348-9151 • Fax: (239) 348-1522

Collier County Parks & Recreation. A wide variety of more than 600 recreational opportunities are available at Collier County's 12 Community parks, 3 Regional parks, 2 BMX Skate parks, and 5 parks with fitness centers.

Collier County Parks & Recreation.

15000 Livingston Road
Naples, FL 34109
Phone: (239) 252-4000 • www.colliergov.net/Index.aspx?page=112

Business Assistance

BUSINESS ASSISTANCE

Economic Development

Collier Business Development

2800 North Horseshoe Drive, Naples, FL 34104
Phone: (239) 252-8990 • BethSterchi@colliergov.net

Enterprise Florida, Inc.

800 Magnolia Avenue, Suite 1100, Orlando, FL 32803
Phone: (407) 956-5600 • Fax: (407) 956-5599 • www.eflorida.com

Florida Economic Development Council, Inc.

3802 Spectrum Boulevard, Suite 141, Tampa, FL 33620
Phone: (813) 977-FEDC • Fax: (813) 977-3338 • www.fedc.net

U.S. Department of Commerce

Economic Development Administration
Atlanta Regional Office
401 West Peachtree Street NW, Suite 1820, Atlanta, GA 30308
Phone: (404) 730-3002 • Fax: (404) 730-3025 • www.eda.gov/

Local Area Chambers of Commerce

Eastern Collier County Chamber of Commerce

310 Alachua Street, Immokalee, FL 34142
Phone: (239) 657-3237 • Fax: (239) 657-5450

Marco Island Chamber of Commerce

1102 North Collier Blvd, Marco Island, FL 34145
Phone: (239) 394-7549 • marcoislandchamber.org

The Greater Naples Chamber of Commerce

2390 Tamiami Trail North, Suite 210, Naples, FL 34103
Phone: (239) 262-6376 • Fax: (239) 262-8374 • www.napleschamber.org

Occupational Safety & Health Administration (OSHA)

U.S. Department of Labor

Ft. Lauderdale Federal Area Office
8040 Peters Road, Building H-100, Ft. Lauderdale, FL 33324
Phone: (954) 424-0242 • Fax: (954) 424-3073 • www.osha.gov

Small Business Development

Florida Gulf Coast University Small Business Development Center

Lutgert Hall-10501 FGCU Blvd South, Ft. Myers, FL 33965
Phone: (239) 745-3700 • www.fgcu.edu/cob/sbdc/

Career & Services Center- Naples

215 Airport Road, Naples, FL 34104
Phone: (239) 436-4301 • Fax: 436-4340 • www.careerandservicecenter.org

Career & Services Center- Immokalee

750 S. 5th Street, Immokalee, FL 34142
Phone: (239) 658-3300 • Fax: 658-3359 • www.careerandservicecenter.org

Small Business Administration-Service corps of Retired Executives (SCORE)

SCORE- Naples/Collier Chapter 573

900 Goodlette Road North, Naples, FL 34102
Phone: (239) 430-0081 • Fax: (239) 430-0082 • www.scorenaples.org

BUSINESS ASSISTANCE

INCORPORATING

Florida Department of State, Division of Corporations
P.O. Box 6327, Tallahassee, FL 32314
Phone: (850) 245-6953 • www.sunbiz.org/index.html

FICTITIOUS NAMES

Florida Department of State, Fictitious name Registration
P.O. Box 6327, Tallahassee, FL 32314
Phone: (850) 245-6058 • www.sunbiz.org

LICENSING

[State of Florida](#)

Department of Business and Professional Regulation

111 West Madison, Tallahassee, FL 32399
Phone: (850) 488-0021 • Fax: (850) 487-9083 • www.oppaga.state.fl.us/profiles/4107/

[Collier County-Zoning Certificate](#)

Collier County Comprehensive Planning & Zoning Services

2800 N. Horseshoe Drive, Suite 400, Naples, FL 34104
Phone: (239) 252-5749 • Fax: (239) 252-2946 • www.colliergov.net/Index.aspx?page=96

[Occupational License](#)

Collier County Tax Collector- Business Tax Receipt Department

2800 Horseshoe Drive, Naples, FL 34104
Phone: (239) 252-2477 • www.colliertax.com

City of Naples- Occupational License Department

735 8th Street South, Naples, FL 34102
Phone: (239) 213-1800 • Fax: (239) 213-1805 • click2gov.naplesgov.com/Click2GovOL/Index.jsp

Everglades City

102 Broadway Avenue, East, Everglades City, FL 34138
Phone: (239) 695-3781 • Fax (239) 695-3020

City of Marco Island- Marco Island City Hall

950 North Collier Blvd, Marco Island, FL 34145
Phone: (239) 389-5000 • Fax (239) 389-4359 • www.marcoislandcity.com

TAXES & REPORTING PROCEDURES

[Employer Identification Number](#)

United States Internal Revenue Service

Atlanta, GA 33901
Phone: (800) 829-3676 • www.irs.gov

[Franchise Registration](#)

Collier County-Franchise and Utility Regulation

2800 North Horseshoe Drive, Suite 210, Naples, FL 34104
Phone: (239) 403-2302 • Fax: (239) 434-5066 • www.colliergov.net

FI Department of Agriculture & Consumer Services

Business Opportunities Section, the Capitol, Tallahassee, FL 32399
Phone: (850)488-3022 • Fax: (850) 487-4177 • www.doacs.state.fl.us/onestop

[Sales Tax Number](#)

Florida Department of Revenue- Tax Information Services

1379 Blountstown Highway, Tallahassee, FL 32304
Phone: (850) 488-9750 • Fax (850) 922-3676 • www.fc.state.fl.us/dor/

BUSINESS ASSISTANCE

Unemployment Tax Number and Workers' compensation

Florida Department of Labor & Employment Security

Division of Workers' Compensation- Bureau of Compliance

The Montgomery Building, 2562 Executive Center Circle East, Suite 105, Tallahassee, FL 32399

Phone: (850) 488-2333 or (800) 482-8293 Fax (850) 922-0226 www.fdles.state.fl.us/wc

State Taxes

- **Corporate Income Tax**
- **Documentary Stamp Tax**
- **Excise Tax**
- **Intangible property**
- **Payroll Taxes- Unemployment, Workmen's Compensation Insurance**
- **Property Taxes- Real and Tangible Property**
- **Retail Sales & Use Tax**

Florida Department of Revenue

Wilson Professional Center, 3200 Bailey Lane, Suite 150, Naples, FL 34105

Phone: (239) 436-1050 • Fax: (239) 436-1078 • www.fcn.state.fl.us/dor/

Florida Department of Revenue-Tax Information Services

1379 Blountstown Highway, Tallahassee, FL 34204

Phone: (800) 352-3671 (Florida only)

Phone: (850) 488-6800 • Fax: (850) 410-1586 • www.fcn.state.fl.us/dor/taxes

Tourist Development Tax

Collier County Tax Collector

3301 Tamiami Trail East, Building C-1, Naples, FL 34112

Phone: (239) 252-8829 • www.colliertax.com

TRADEMARKS & PATENTS

Florida Department of State-Division of Corporations

P.O. Box 6327, Tallahassee, FL 32314

Phone: (850) 245-6051 • www.sunbiz.org/index.html

U.S. Patent and Trademark Office- General Information Services Division

Visit (www.uspto.gov/web/menu/feedback.html#mail) for a complete listing of mailing address options

Phone: (800) 786-9199 or (571)272-1000 • Fax (571) 273-8300 • www.uspto.gov/index.html

**If you would like to move or expand your business in Collier County,
contact:**

Collier Business & Economic Development

2800 N. Horseshoe Drive

Naples, Florida 34104

Phone (239)252-8990

Fax (239)252-2405

www.NaplesWorks.com