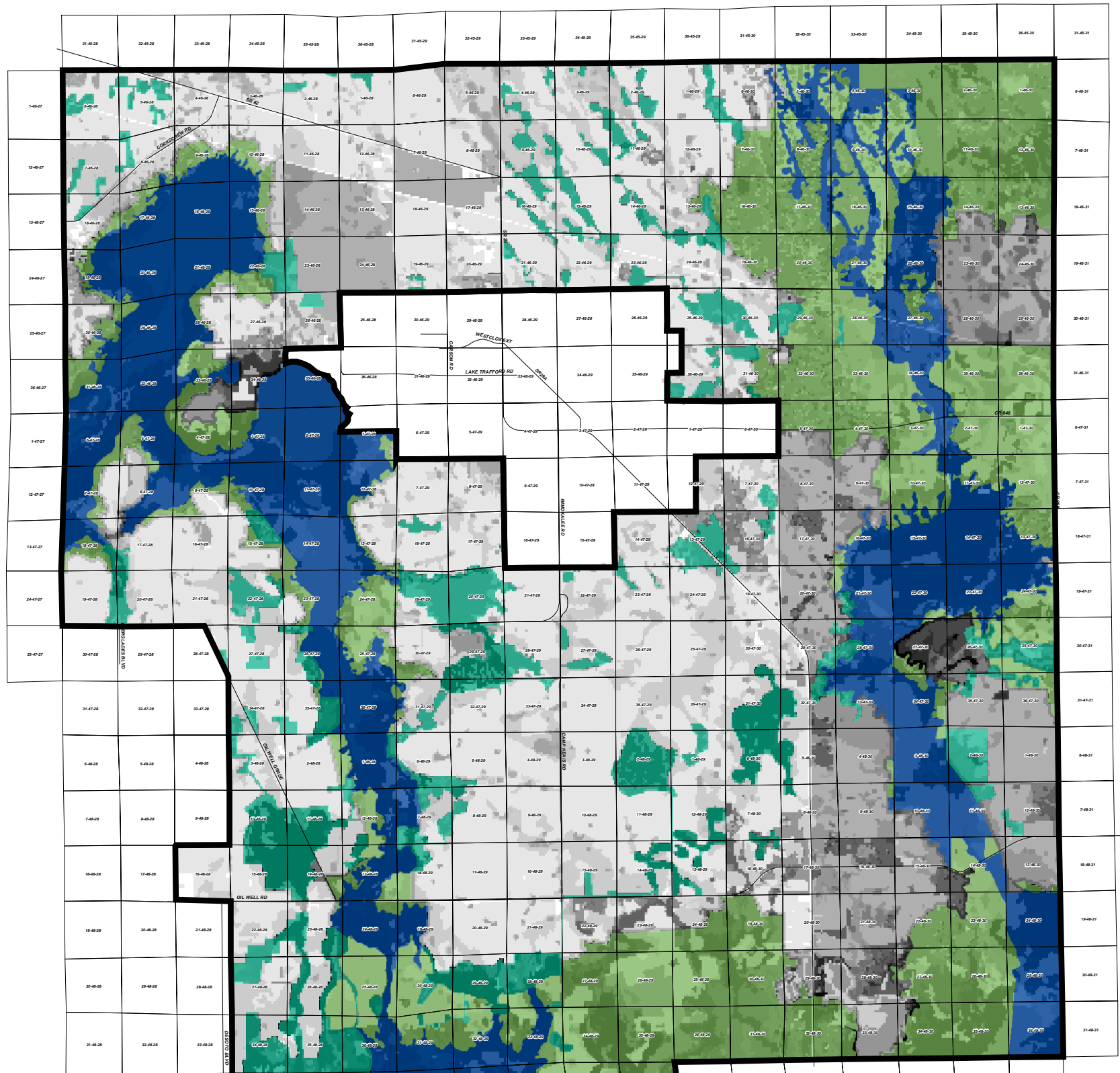


Rural Lands Study Area Natural Resource Index Map Series

Entire Study Area



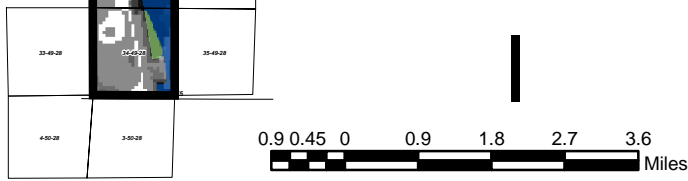
Legend

Index Value

| | |
|-----|-----|
| 0 | 1.3 |
| 0.2 | 1.4 |
| 0.3 | 1.5 |
| 0.4 | 1.6 |
| 0.5 | 1.7 |
| 0.6 | 1.8 |
| 0.7 | 1.9 |
| 0.8 | 2 |
| 0.9 | 2.1 |
| 1 | 2.2 |
| 1.1 | 2.3 |
| 1.2 | 2.4 |

Stewardship Area Type

- Flowway
- Habitat
- Water Retention



WilsonMiller
 New Directions In Planning, Design & Engineering
 3200 Bailey Lane, Suite 200 Naples, Florida 34105
 Phone (941) 649-4040 Fax (941) 643-5716
 www.wilsonmiller.com

| Stewardship Natural Resource Index Factors | |
|--|-----|
| Stewardship Overlay Designation | |
| Flowway Stewardship Area (FSA) | 0.7 |
| Habitat Stewardship Area (HSA) | 0.6 |
| Water Retention Area (WRA) | 0.6 |
| Area of Critical State Concern (ACSC) | 0.4 |
| None of the above | 0.0 |
| Proximity Indices | |
| Enclosed by FSA, HSA, or WRA | 0.4 |
| Within 300 feet of FSA or HSA | 0.3 |
| Within 300 feet of public or private preserve land | 0.2 |
| None of the above | 0.0 |
| Listed Species Habitat Indices | |
| Parthen occupied habitat (preferred and tolerated) plus other listed species | 0.8 |
| Parthen occupied habitat (preferred and tolerated) | 0.5 |
| Other documented listed species habitat | 0.4 |
| None of the above | 0.0 |
| Soils/Surface Water Indices | |
| Open Water and Muck Deposition soils | 0.4 |
| Sand Deposition soils | 0.3 |
| Flats (Transitional) soils | 0.2 |
| Non-hydric soils | 0.0 |
| Restoration Potential Indices | |
| Large mammal corridor restoration areas | 0.5 |
| Connector wetlands and flowway restoration areas | 0.3 |
| Wading bird restoration areas | 0.4 |
| Other listed species restoration areas | 0.1 |
| None of the above | 0.0 |
| Land Use - Land Cover Indices | |
| FLUCCS Code Group 1 | 0.4 |
| FLUCCS Code Group 2 | 0.3 |
| FLUCCS Code Group 3 | 0.2 |
| FLUCCS Code Group 4 | 0.0 |