

CASING END SEAL

NOTES:

1. UNDERGROUND CROSSINGS REQUIRE A MINIMUM VERTICAL CLEARANCE OF 48" BELOW PAVEMENT SURFACE FOR FREEWAYS, 36" FOR OTHER HIGHWAYS AND SUBAQUEOUS CROSSINGS OR 30" BELOW UNPAVED GROUND INCLUDING DITCH GRADE PER FLORIDA D.O.T.
2. SEE TECHNICAL SPECIFICATIONS FOR CARRIER PIPE AND CASING PIPE REQUIREMENTS.

STAINLESS STEEL SPACERS:

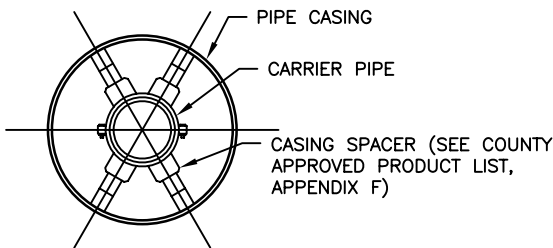
1. SPACERS SHALL BE BOLT-ON STYLE WITH A TWO PIECE SOLID SHELL MADE FROM T-304 STAINLESS STEEL OF A MINIMUM 14 GAUGE THICKNESS. THE SHELL SHALL BE LINED WITH A RIBBED PVC SHEET OF A 0.090" THICKNESS THAT OVERLAPS THE EDGES. RUNNERS MADE FROM UHMW POLYMER SHALL BE ATTACHED TO RISERS AT APPROPRIATE POSITIONS TO PROPERLY LOCATE THE CARRIER WITHIN THE CASING AND TO EASE INSTALLATION. RISERS SHALL BE MADE FROM T-304 STAINLESS STEEL OF A MINIMUM 14 GAUGE THICKNESS AND SHALL BE ATTACHED TO THE SHELL BY MIG WELDING. ALL WELDS SHALL BE FULLY PASSIVATED. ALL FASTENERS SHALL BE MADE FROM T-304 STAINLESS STEEL. CASING SPACERS (SEE COUNTY APPROVED PRODUCT LIST, APPENDIX F).

PLACEMENT OF SPACERS ON CARRIER PIPE:

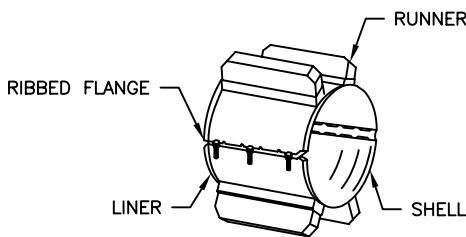
1. GENERAL - ONE SPACER SHALL BE PLACED NOT MORE THAN TWO FEET FROM EACH END OF CASING. SUBSEQUENT SPACERS SHALL BE PLACED AT 6' TO 10' INTERVALS WITHIN THE CASING, OR IN ACCORDANCE WITH PIPE MANUFACTURER'S RECOMMENDATIONS.
2. PVC CARRIER - ONE SPACER SHALL BE PLACED ON THE SPIGOT END OF EACH SEGMENT AT THE LINE MARKING THE LIMIT OF INSERTION INTO THE BELL. WHEN THE JOINT IS COMPLETE, THE SPACER SHALL BE IN CONTACT WITH THE BELL OF THE JOINT SO THAT THE SPACER PUSHES THE JOINT AND RELIEVES COMPRESSION WITHIN THE JOINT. SUBSEQUENT SPACERS SHALL BE PLACED AT 6' TO 10' INTERVALS IN ACCORDANCE WITH MANUFACTURER'S RECOMMENDATIONS.

CARRIER PIPE:

1. CARRIER PIPE SHALL BE CENTERED WITHIN CASING BY USE OF STAINLESS STEEL CASING SPACERS (SEE COUNTY APPROVED PRODUCT LIST, APPENDIX F).



SECTION A-A



SPACER

STANDARD NUMBER OF RUNNERS REQUIRED

UP TO 14" CARRIER PIPE	- 4 REQUIRED
OVER 14" THROUGH 36" CARRIER PIPE	- 6 REQUIRED
OVER 36" THROUGH 48" CARRIER PIPE	- 7 REQUIRED