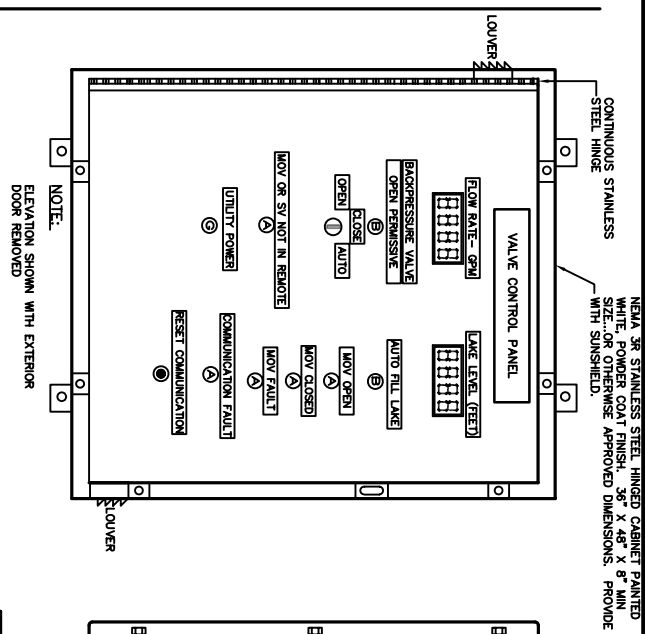
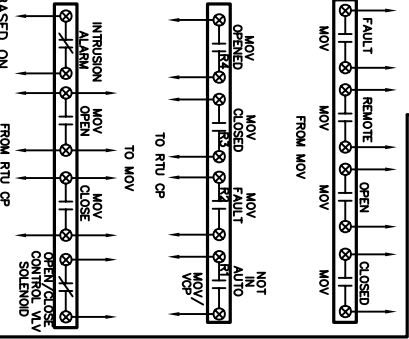
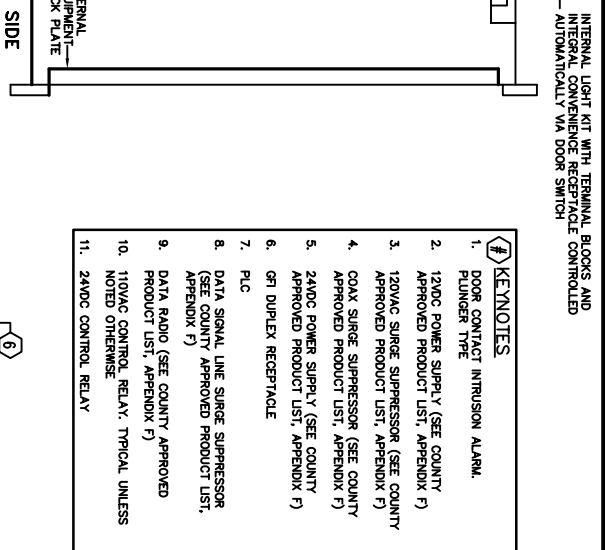


NOTE:
TYPICAL CONTROL PANEL WIRING AND MOUNTING IS BASED ON USING SINGLE PANEL FOR VALVE CONTROL AS WELL AS TELEMETRY. FOR SITES WHERE SEPARATE PANEL PROVISIONS ARE REQUIRED (ONE FOR VALVE CONTROL AND ONE FOR TELEMETRY) CONSULT WITH COUNTY PLD/AO STAFF FOR APPROVED MODIFICATIONS TO THIS AND RELATED DRAWINGS.

VALVE CONTROL PANEL ELEMENTARY



FRONT



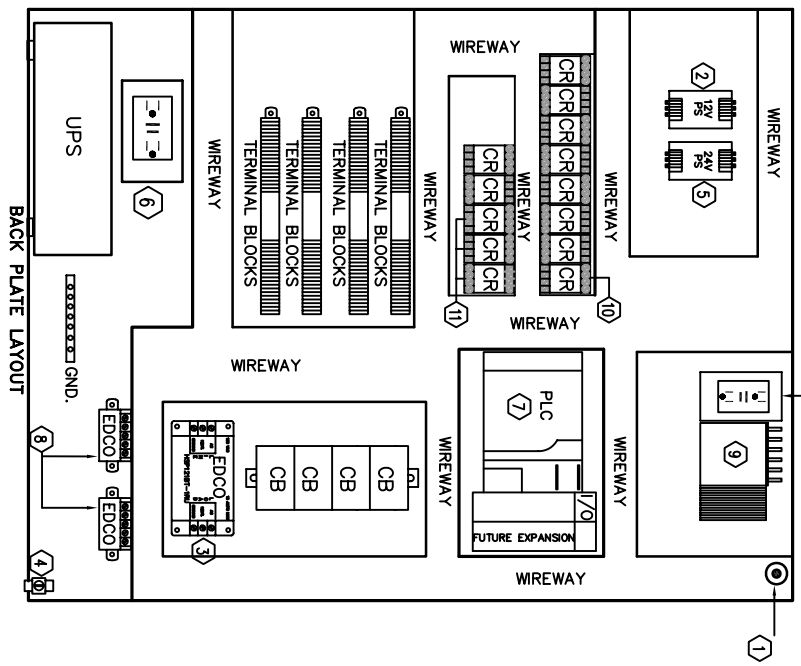
SIDE

OPEN/CLOSE REUSE SERVICE CONNECTION RTU I/O POINT LIST

- ANALOG IN**
- 1) FLOW RATE
 - 2) LAKE LEVEL/TANK LEVEL
- DIGITAL IN**
- 1) MOV OPEN
 - 2) MOV CLOSED
 - 3) MOV OR VOP NOT IN REMOTE
 - 4) MOV FAULT
 - 5) UTILITY POWER FAILURE
 - 6) RAIN GAUGE*
 - 7) VALVE CONTROL PANEL NOT IN AUTO WITH THE ISO 6724
 - 8) DOOR INTRUSION ALARM
 - 9) BACK PRESSURE SUSTAINING VALVE LIMIT SWITCH
 - 10) PULSED FLOW RATE (FOR TOTALIZATION)
- DIGITAL OUT**
- 1) OPEN MOV
 - 2) CLOSE MOV
 - 3) BACK PRESSURE SUSTAINING VALVE SOLENOID

ALLEN BRADLEY MICROLOGIX 1100, P/N 1763-16AWA WITH DUAL COMM PORTS (BUILT-IN ETHERNET/IP AND ISOLATED RS-232/RS-485COMBO); 4-PT ANALOG INPUT CARD, P/N 1762-1F4; AND EEPROM MEMORY MODULE, P/N 1763-MM1.

REUSE SYSTEM STANDARD SERVICE CONNECTIONS OPEN/CLOSE VALVE SINGLE CONTROL PANEL SITE LAYOUT & ELEMENTARY



BACK PLATE LAYOUT

- KEYNOTES**
1. DOOR CONTACT INTRUSION ALARM PLUNGER TYPE
 2. 24VDC POWER SUPPLY (SEE COUNTY APPROVED PRODUCT LIST, APPENDIX F)
 3. 120VAC SURGE SUPPRESSOR (SEE COUNTY APPROVED PRODUCT LIST, APPENDIX F)
 4. COAX SURGE SUPPRESSOR (SEE COUNTY APPROVED PRODUCT LIST, APPENDIX F)
 5. 24VDC POWER SUPPLY (SEE COUNTY APPROVED PRODUCT LIST, APPENDIX F)
 6. GFI DUPLEX RECEPTACLE
 7. PLC
 8. DATA SIGNAL LINE SURGE SUPPRESSOR (SEE COUNTY APPROVED PRODUCT LIST, APPENDIX F)
 9. DATA RADIO (SEE COUNTY APPROVED PRODUCT LIST, APPENDIX F)
 10. 110VAC CONTROL RELAY, TYPICAL UNLESS NOTED OTHERWISE
 11. 24VDC CONTROL RELAY