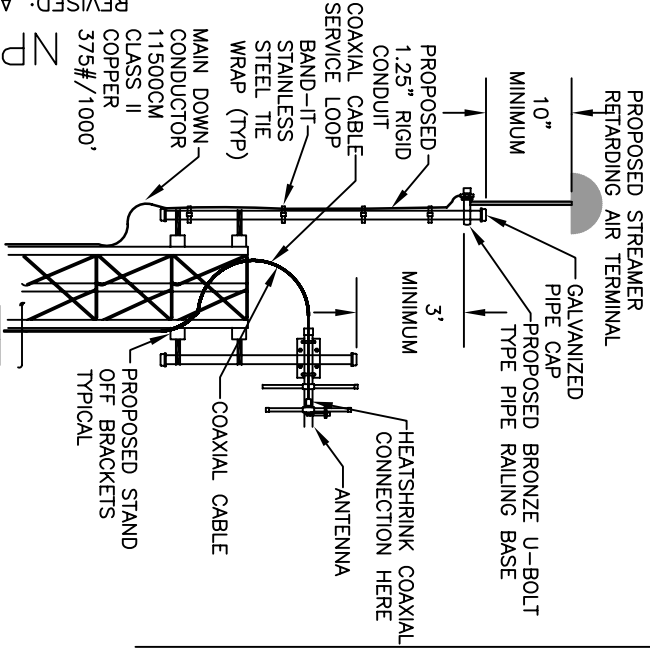
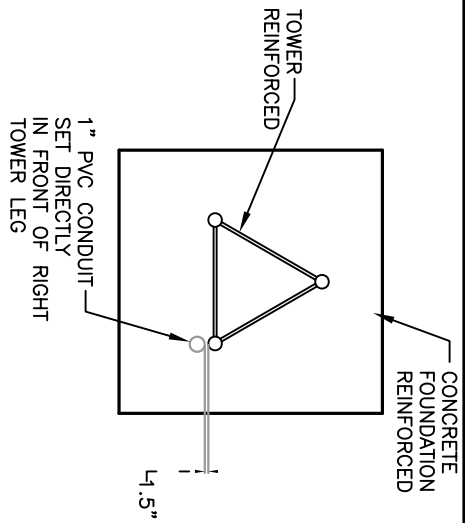


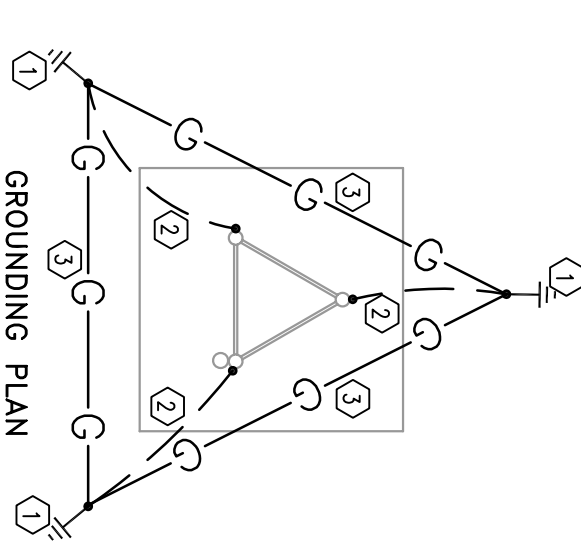
DETAIL #1 GROUNDING DETAIL



DETAIL #2 TOWER TOP DETAIL



CONDUIT DETAIL TOP VIEW



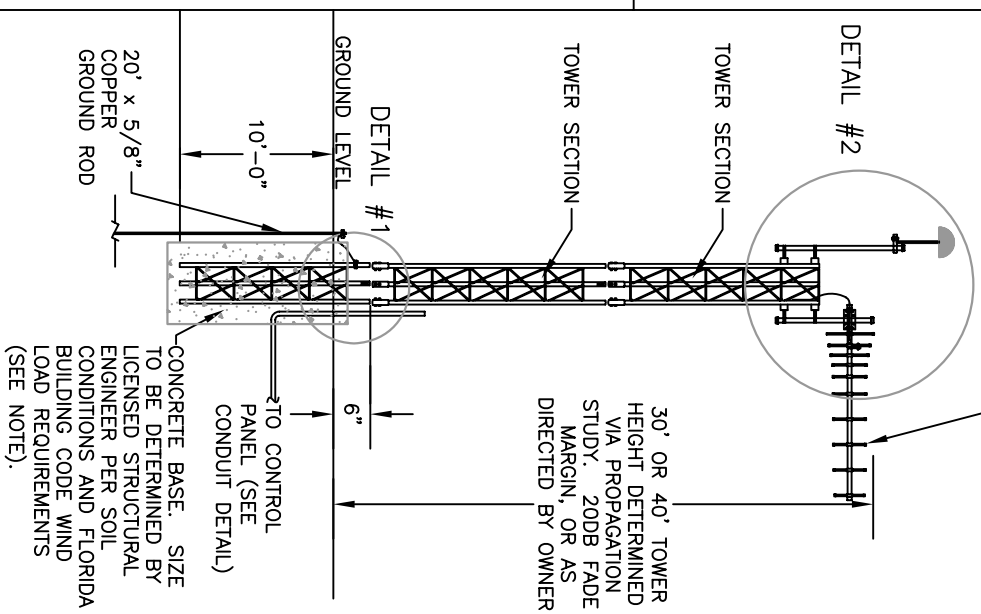
KEYNOTES:

1. 20' DRIVEN GROUND ROD WITH INSPECTION TEST WELL (SEE DETAIL) (TYP).
2. #2 TINNED SOLID COPPER TO TOWER LEG (TYP).
3. #2 TINNED BARE COPPER COUNTERPOISE LOOP GROUND (TYP).

TELEMETRY FREQUENCY AS DETERMINED BY THE COUNTY

ANTENNA (SEE COUNTY APPROVED PRODUCT LIST, APPENDIX F)

DETAIL #2



TYPICAL POLE DETAIL

NOTE:
TOWER/ANTENNA ASSEMBLY AND FOUNDATION CONSTRUCTION MUST MEET CURRENT EDITION FLORIDA BUILDING CODE WIND LOAD REQUIREMENTS FOR 140 MPH WIND ZONE. PROVIDE STRUCTURAL CERTIFICATION BY FLORIDA REGISTERED LICENSED PROFESSIONAL ENGINEER.

REUSE SYSTEM STANDARD SERVICE CONNECTIONS
OPEN/CLOSE VALVE SINGLE CONTROL PANEL SITE
TYPICAL RTU ANTENNA TOWER DETAILS