

Session Name: 161013_GGC Workshop_Audience Polling Results

Date Created: 10/13/2016 6:10:31 PM

Active Participants: 36 of 36

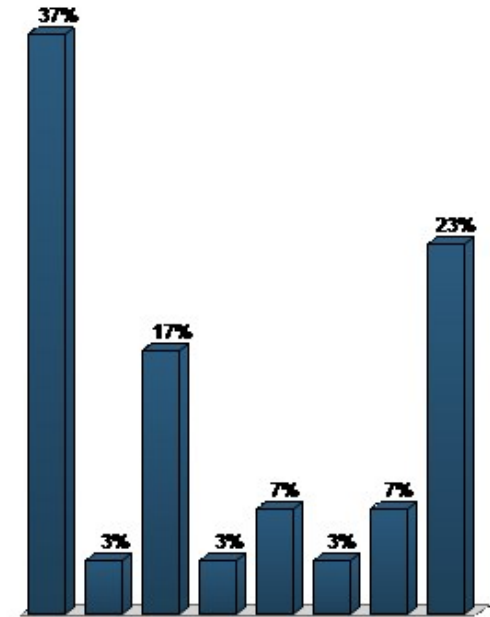
Average Score: 0.00%

Questions: 22

Results by Question

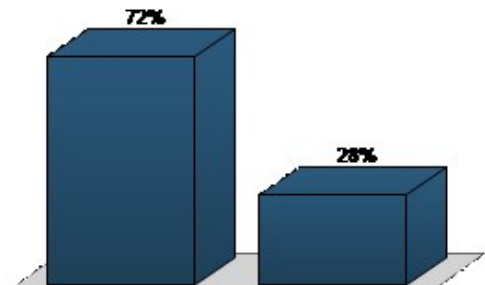
1. What is your favorite local high school football team? (Multiple Choice)

Responses		
	Percent	Count
Golden Gate Titans	36.67%	11
Gulf Coast Sharks	3.33%	1
Barron Collier Cougars	16.67%	5
Lely Trojans	3.33%	1
Naples Golden Eagles	6.67%	2
Palmetto Ridge Bears	3.33%	1
Immokalee Indians	6.67%	2
I don't have a favorite	23.33%	7
Totals	100%	30



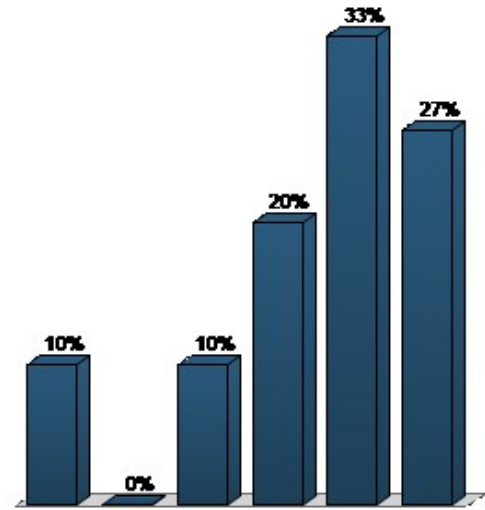
2. Do you live in Golden Gate City? (Multiple Choice)

Responses		
	Percent	Count
Yes	71.88%	23
No	28.12%	9
Totals	100%	32



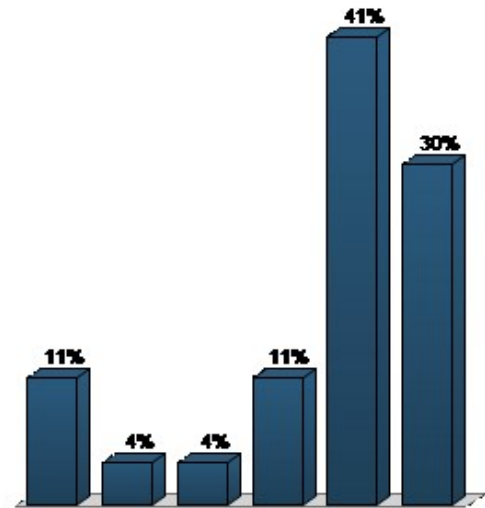
3. How long have you lived in Golden Gate City? (Multiple Choice)

	Responses	
	Percent	Count
Less than 1 Year	10%	3
1 > 5 Years	0%	0
5 > 10 Years	10%	3
10 > 20 Years	20%	6
Over 20 Years	33.33%	10
I don't live in GG City	26.67%	8
Totals	100%	30



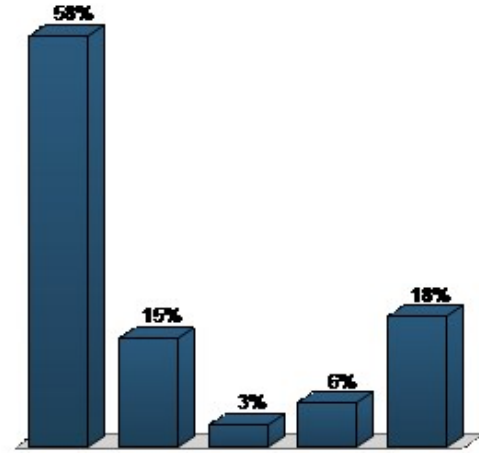
4. How long have you lived in Golden Gate City? (Multiple Choice)

	Responses	
	Percent	Count
Less than 1 Year	11.11%	3
1 > 5 Years	3.7%	1
5 > 10 Years	3.7%	1
10 > 20 Years	11.11%	3
Over 20 Years	40.74%	11
I don't live in GG City	29.63%	8
Totals	100%	27



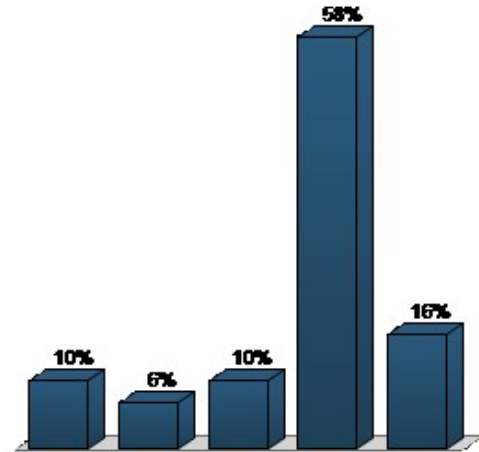
5. Which option best represents your relationship to Golden Gate City? (Multiple Choice)

Responses		
	Percent	Count
Resident	57.58%	19
Business Owner	15.15%	5
Developer/ Representative	3.03%	1
Elected Official	6.06%	2
Other	18.18%	6
Totals	100%	33



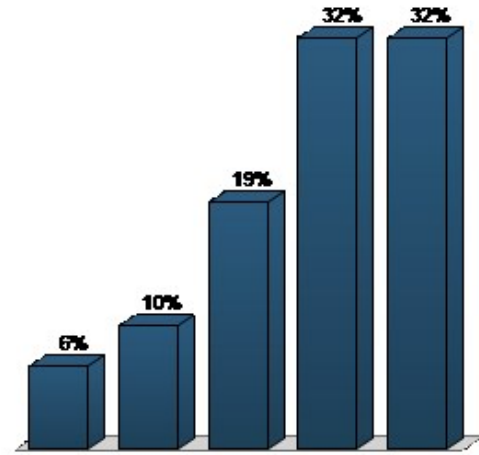
6. How satisfied are you with the locations of existing commercial uses in Golden Gate City? (Multiple Choice)

Responses		
	Percent	Count
Very Unsatisfied	9.68%	3
Somewhat Unsatisfied	6.45%	2
Not Sure	9.68%	3
Somewhat Satisfied	58.06%	18
Very Satisfied	16.13%	5
Totals	100%	31



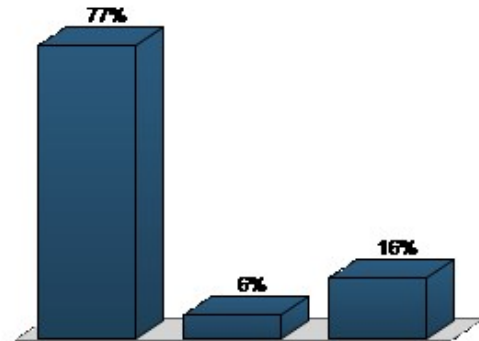
7. How satisfied are you with the potential locations of commercial uses in Golden Gate City? (Multiple Choice)

Responses		
	Percent	Count
Very Unsatisfied	6.45%	2
Somewhat Unsatisfied	9.68%	3
Not Sure	19.35%	6
Somewhat Satisfied	32.26%	10
Very Satisfied	32.26%	10
Totals	100%	31



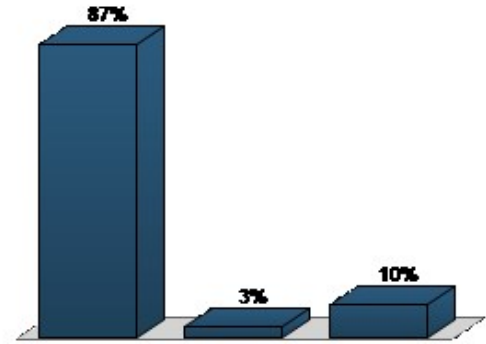
8. Do you support a more uniform set of development rules for commercial or mixed-use areas? (Multiple Choice)

Responses		
	Percent	Count
Yes	77.42%	24
No	6.45%	2
Not Sure	16.13%	5
Totals	100%	31



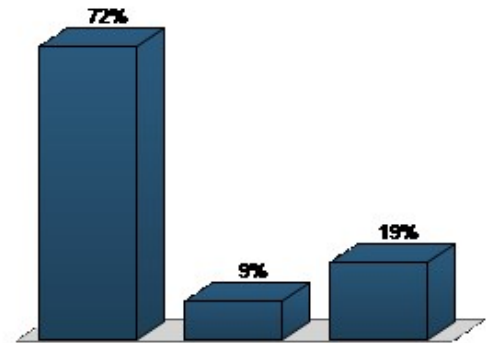
9. Do you agree with existing policies about citizen-driven planning efforts? (Multiple Choice)

Responses		
	Percent	Count
Yes	87.1%	27
No	3.23%	1
Not Sure	9.68%	3
Totals	100%	31



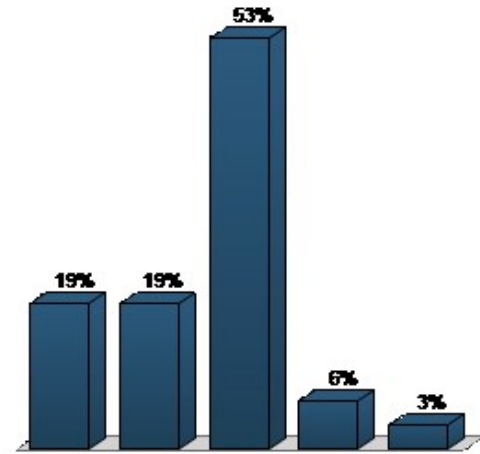
10. Would you volunteer 1 evening per month to serve on a planning committee? (Multiple Choice)

Responses		
	Percent	Count
Yes	71.88%	23
No	9.38%	3
Not Sure	18.75%	6
Totals	100%	32



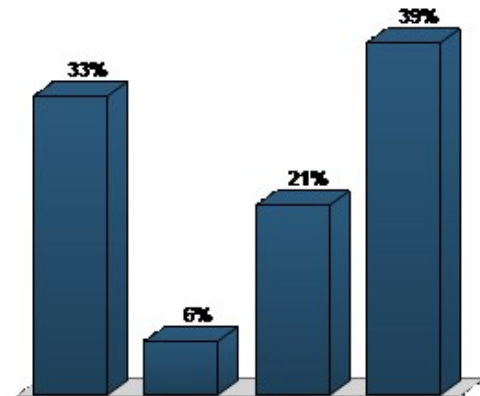
11. What type of commercial use is most needed in Golden Gate City? (Multiple Choice)

Responses		
	Percent	Count
Retail	18.75%	6
Personal Services	18.75%	6
Dining	53.12%	17
Offices	6.25%	2
Other	3.12%	1
Totals	100%	32



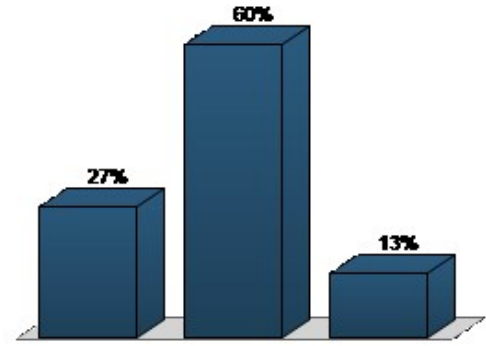
12. What type of institution is most needed in Golden Gate City? (Multiple Choice)

Responses		
	Percent	Count
Government Services	33.33%	11
Places of Worship	6.06%	2
Adult and Child Care Centers	21.21%	7
Other	39.39%	13
Totals	100%	33



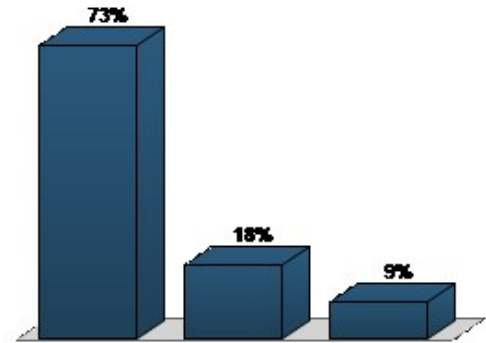
13. Do you have adequate health care resources in Golden Gate City? (Multiple Choice)

Responses		
	Percent	Count
Yes	26.67%	8
No	60%	18
Not Sure	13.33%	4
Totals	100%	30



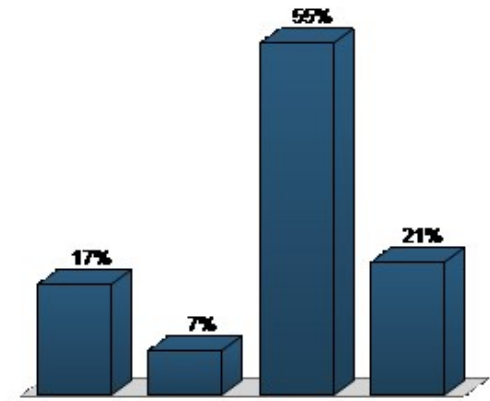
14. Do you think Golden Gate City should have its own unique standards for architecture or landscaping? (Multiple Choice)

Responses		
	Percent	Count
Yes	72.73%	24
No	18.18%	6
Not Sure	9.09%	3
Totals	100%	33



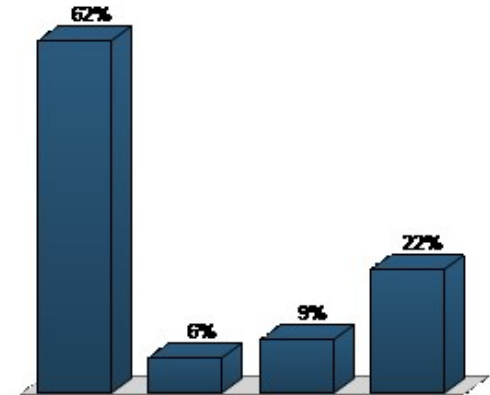
15. How should home-based businesses change in any way in Golden Gate City? (Multiple Choice)

Responses		
	Percent	Count
Expanded	17.24%	5
Reduced	6.9%	2
Stay the Same	55.17%	16
Not Sure	20.69%	6
Totals	100%	29



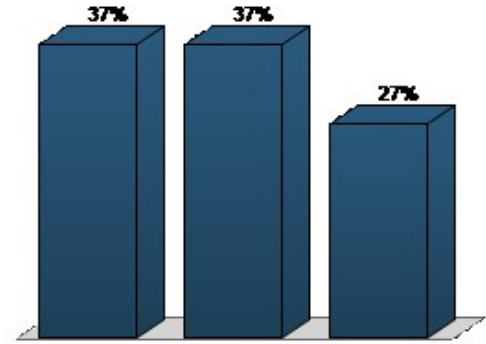
16. How often do you walk to get somewhere in Golden Gate City? (Multiple Choice)

Responses		
	Percent	Count
Never	62.5%	20
Monthly	6.25%	2
Weekly	9.38%	3
Daily	21.88%	7
Totals	100%	32



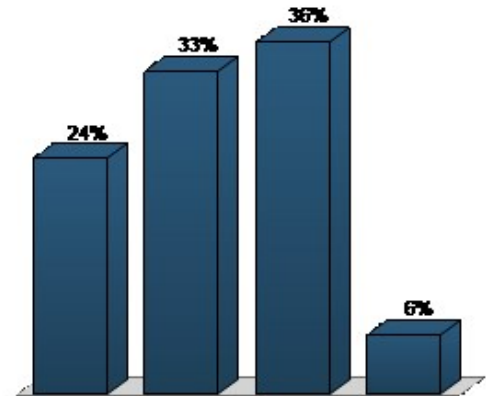
17. Do you have school-aged children that walk or ride bikes to school? (Multiple Choice)

Responses		
	Percent	Count
Yes	36.67%	11
No	36.67%	11
I don't have children	26.67%	8
Totals	100%	30



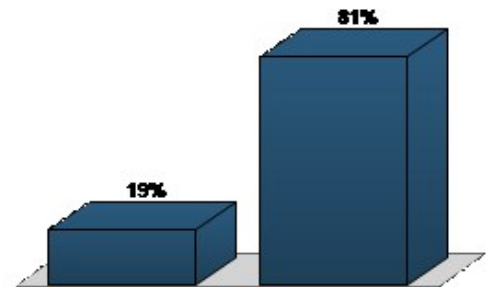
18. Of the following options, what is your top priority for improvement in Golden Gate City? (Multiple Choice)

Responses		
	Percent	Count
Street Lighting	24.24%	8
Traffic Calming	33.33%	11
Sidewalks	36.36%	12
Bike Routes/Lanes	6.06%	2
Totals	100%	33



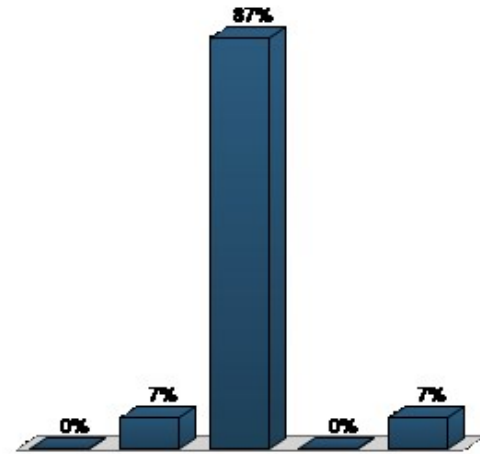
19. Have you ever used Collier Area Transit (CAT) service? (Multiple Choice)

Responses		
	Percent	Count
Yes	19.35%	6
No	80.65%	25
Totals	100%	31



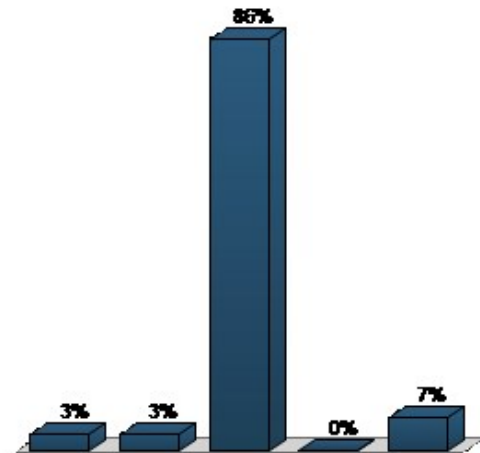
20. How satisfied are you with the current CAT routes? (Multiple Choice)

Responses		
	Percent	Count
Very Unsatisfied	0%	0
Somewhat Unsatisfied	6.67%	2
Not Sure	86.67%	26
Somewhat Satisfied	0%	0
Very Satisfied	6.67%	2
Totals	100%	30



21. How satisfied are you with the current CAT service times and schedule? (Multiple Choice)

Responses		
	Percent	Count
Very Unsatisfied	3.45%	1
Somewhat Unsatisfied	3.45%	1
Not Sure	86.21%	25
Somewhat Satisfied	0%	0
Very Satisfied	6.9%	2
Totals	100%	29



22. How satisfied are you with gateway design for Golden Gate City along Golden Gate Parkway? (Multiple Choice)

Responses		
	Percent	Count
Very Unsatisfied	22.58%	7
Somewhat Unsatisfied	22.58%	7
Not Sure	9.68%	3
Somewhat Satisfied	25.81%	8
Very Satisfied	19.35%	6
Totals	100%	31

