



City of Naples Stormwater Master Plan Update Public Information Meeting



January 23, 2017

Presented by the City of Naples, AECOM,
AMEC Foster Wheeler, and Cella Molnar &
Associates

Why Stormwater?

The City of Naples receives an average annual rainfall of 56 inches which equates to approximately 14 billion gallons of water in a year.

- ❖ Stormwater is discharged into the Gulf of Mexico, Naples Bay, local lakes and waterbodies, and the groundwater.
- ❖ City infrastructure conveys and treats the stormwater.

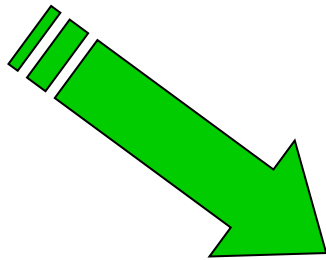


Stormwater Utility Enterprise Fund

- Based on the City's 10-Year SW Master Plan (2007)
- 2008 GOAL:** Achieve a \$4 Million Stormwater Enterprise Fund to Chip Away at \$70 Million of Work Identified in the Master Plan;
- Added a Stormwater Utility Fee Credit of Up To 30% for Properties With Water Mgmt Systems;
- 2008 Rate Change: \$4 to \$11.40 /ARU with CPI increase; 2017 Rate: \$13.06 /ARU
- Required Stormwater Mgt Systems for New SF

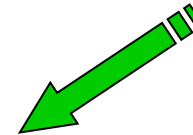
REVENUE IMPACTS

of ARU's Billed



Grants

\$\$

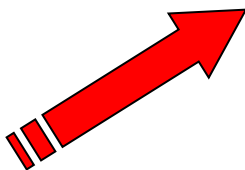


**STORMWATER
ENTERPRISE
FUND**

Interest
Earned



Credits
Issued



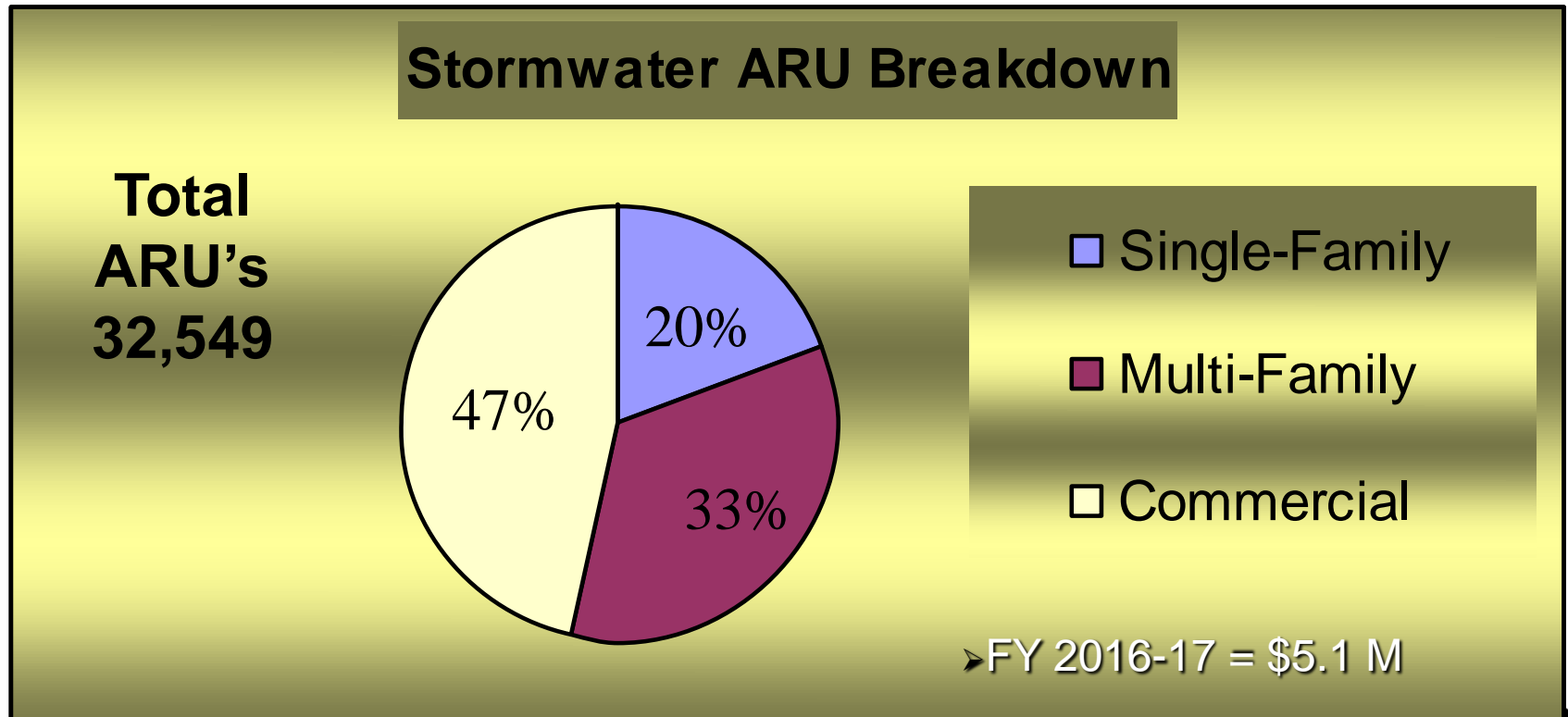
Unpaid
Accounts ^{AECOM}

Credit Policy

- Credit policy based upon presence of on-site, privately maintained stormwater facilities or SFWMD/FDEP ERP Permit
- Up to 30% credit of stormwater rate.
- Partial credit is eligible for non-residential systems not achieving 1" site or 2.5" impervious

Current ARU Breakdown...

- Single Family Residential (6,549 ARU's)
- **Multi Family Residential (9,512 ARU's)** (2011: 10,709 ARUs)
- Commercial, Gov, Schools, Churches (15,291 ARU's)



The Multi-Family Impervious Option

- **OPTION:** Allow Multi-Family Properties the option of being billed based on impervious area OR number of residential units.
- Individual properties would consider the economic benefit (or burden) of changing.
- Individual properties that elect to change would provide the City a signed and sealed letter from a licensed land surveyor that certifies total impervious area of the property and any common area used by the property.

Why do we need a Stormwater Master Plan?

Stormwater runoff is an increasingly important resource that needs to be managed from both a water quantity and quality standpoint.

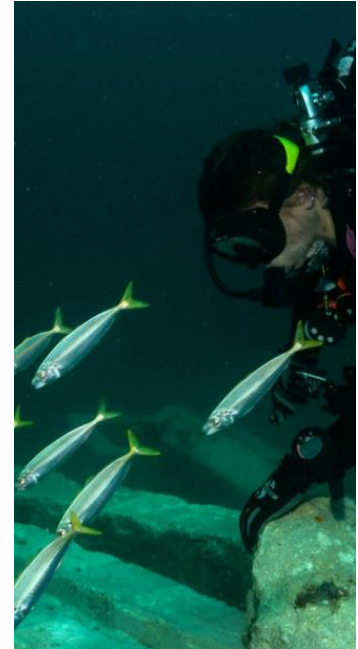
- ❖ A plan allows the City to record and evaluate current stormwater management practices.
- ❖ Allows the City to establish goals and provide a foundation for future policy decisions.
- ❖ Establishes Capital Projects for the next 10 years.



Aerial of the City of Naples

Which components are being evaluated in the Stormwater Master Plan?

- ❖ Water Quantity – Flooding and Recovery
- ❖ Water Quality and Ecology
- ❖ Stormwater Infrastructure – Operation and Maintenance
- ❖ Climate Adaptation - Sea Level Rise and Resiliency
- ❖ Regulation
- ❖ Funding – Stormwater Utility Fees and Grants
- ❖ Capital Improvements



What information we would like from YOU?

You live here and have a lot of local knowledge in your community.

Please visit each of the stations and provide your input on each of the components.

Once you have visited each station, go to the summary station to tell us which components are the most important to you!



Thank You

Any additional comments can be directed to the City's Project Manager, Andy Holland, PE at (239) 213-5001 or aholland@naplesgov.com